



Overview
Quick Start
Buy A Registration Code!

DJ Fun

Beatmatched CDs
Crossfading Fun
Changing A Song's Key
Making A Beatmatched MP3
Beat Matching The Easy Way!!!
Removing Vocals From A Song
Making Songs Sound The Same Volume
Using Effects

Basics

Find Your Songs
Your Music Library
Rip Your CDs
Play Your Songs
Arrange Your Songs
Burn A CD!
Mix Down/Render To Audio File
Transfer Song List To MP3 player/folder

Preferences - Menu Help - Toolbar Help - Support - Troubleshooting - ~~Acoustica Information~~

DJ Twist & Burn™ © 2006 Acoustica, Inc. All Rights Reserved.

DJ Twist & Burn is a registered trademarks of Acoustica, Inc.

Élastic efficient time stretching by zplane.development

Ogg Vorbis © 2006, Xiph.Org Foundation

Many thanks to the LAME team for their work on the LAME encoder. See their website at mp3dev.org/mp3

Overview

DJ Twist & Burn™ is an extremely easy way to edit and shape your music.

What can you do with DJ Twist & Burn?

You can 'beatmatch' or mix your music so that the beats of your songs line up without any jarring change. Trim the fat off songs by getting rid of silence, talking, applause, long fade outs or fade ins. Change the key of any song so that you can sing or play along with it. Harmonically mix your songs so that each transition is as smooth as possible. Remove the vocals from songs for Karaoke like songs. Add EQ, echoes, flange, reverb or any effect, including VST or DirectX effects. Mix down your song list to an audio CD or MP3 file.

Who can use DJ Twist & Burn?

Professional and amateur DJs can use the software to create the perfect seamless beatmatched mix. Fit minded and health oriented enthusiasts can create CDs or MP3s for workouts such as aerobics, spinning, running, bicycling or whatever makes you sweat to the beat. Cheerleaders, dancers, ice skaters or other artistic performers can create masterful tempo adjusted routines. Dancers, ravers and night owls can easily build their own sets for the ultimate dance mix.

Quick Start

DJ Fun

Beatmatched CDs

Crossfading Fun

Changing A Song's Key

Making A Beatmatched MP3

Removing Vocals From A Song

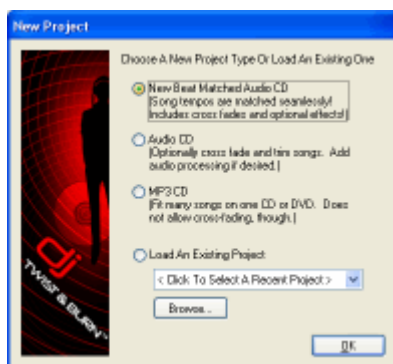
Making Songs Sound The Same Volume

Using Effects

Quick Start

So you wanna make a DJ mix in a hurry? It's as easy as apple pie. No math required, honest!

Step 1: Run the software and select the 'Beat Matched Audio CD' project type. (The first option.) Then click "OK"



Step 2: The DJ Fader window appears next. Edit the fade times, fade types, master tempo, harmonic mixing options to your desire. For example, if you choose 130 BPM (beats per minute), all songs will be automatically adjusted to 130 BPM. Or you can just accept the

defaults by clicking OK. (You can always change this later.)



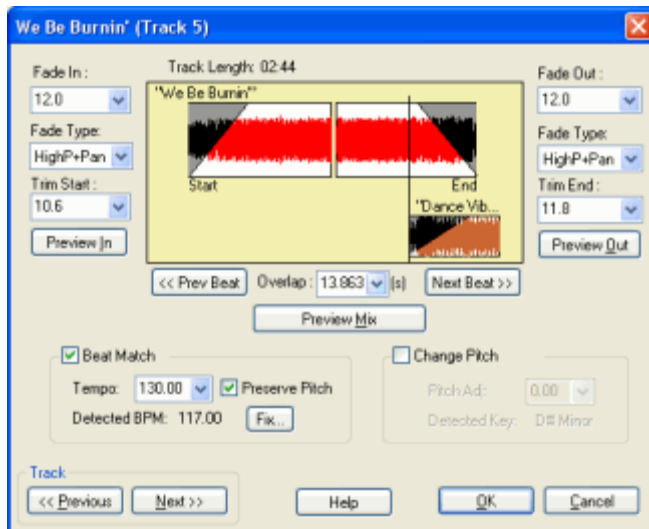
Step 3: Add some songs. You can add songs from existing CDs by ripping them or you can add MP3s, WMAs, WAVs or OGGs from your hard drive. Each song will load and show a tempo of 130 BPM. (Assuming that was your choice)

TH	Title	Length	Tempo	Orig...	Key	Orig...	Ptc...	Time...	Effects	Album	Artist	Status
1	You'll Have Time	03:45	102.1	82.1	G Major	G Major	+0.0	80.4%	None	Has Be...	Willian...	Ready
2	Yes Yes Y'all (Featuring ...	03:15	102.1	93.9	G Minor	A Minor	-2.0	91.9%	None	Big Will...	Will Sin...	Ready
3	Y'all Know	02:48	102.1	90.5	C Minor	B Minor	+1.0	89.5%	None	Big Will...	Will Sin...	Ready
4	What Have You Done	01:03	102.1	109.2	D# Major	D Major	+1.0	109.5%	None	Has Be...	Willian...	Ready
5	Together	04:58	102.1	104.1	D# Major	E Major	-1.0	101.9%	None	Has Be...	Willian...	Ready
6	The Night Is Young	02:00	102.1	74.9	C Minor	C# Minor	-1.0	73.4%	None	On The...	Van Hunt	Ready
7	The Leaving Song Pt. II	02:13	102.1	91.3	D# Minor	D# Minor	+0.0	89.4%	None	Sing T...	AFI	Ready
8	That's Me Tying	04:06	102.1	138.7	F# Major	G Major	-1.0	139.8%	None	Has Be...	Willian...	Ready
9	Suspicion (She Knows ...	03:54	102.1	104.2	C# Minor	D Minor	-1.0	102.0%	None	On The...	Van Hunt	Ready
10	Slowly	02:03	102.1	90.1	C# Minor	B Minor	+2.0	79.4%	None	PCCD	The Pu...	Ready
11	Steady, As She Goes	03:30	102.1	133.0	C# Minor	B Minor	+2.0	120.5%	None	Steady...	The Ra...	Ready
12	Ride, Ride, Ride	03:42	102.1	131.0	E Minor	C# Minor	+1.0	123.3%	None	On The...	Van Hunt	Ready
13	Reheat Phones Rerun	07:06	102.1	137.0	G Minor	G Minor	+0.0	134.1%	None	Reheat...	The Ra...	Ready
14	Real	01:55	102.1	84.9	C Major	C Major	+0.0	83.1%	None	Has Be...	Willian...	Ready
15	Prairie Wind (Album Vers...	08:14	102.1	133.8	C Minor	D Minor	-2.0	121.3%	None	Prairie...	the wo...	Ready
16	Niani	02:48	102.1	108.2	D# Minor	D Minor	+1.0	106.0%	None	Big Will...	Will Sin...	Ready
17	Men In Black	03:15	102.1	107.7	A# Minor	B Minor	-1.0	109.4%	None	Big Will...	Will Sin...	Playing
18	Keith B-Real II (Interlude)	00:04	102.1	82.6	D# Minor	D# Minor	+0.0	80.9%	None	Big Will...	Will Sin...	Ready

Step 4: Click "One Click EZ Beat Matcher!" Select "One Click EZ Beat Matcher!" from the "Song List" menu. This will automatically sort all songs by their original tempo and beatmatch them. More on Beatmatching the easy way...



Step 5: Adjust any songs that need fine tuning, such as trimming extra silence or long fade ins.



Step 6: Click "Burn CD" to create an audio CD or select "Render To File" from the "File" menu to create an actual MP3, OGG, WMA or WAV file.

That's it!! Enjoy your audio CD or MP3 file!

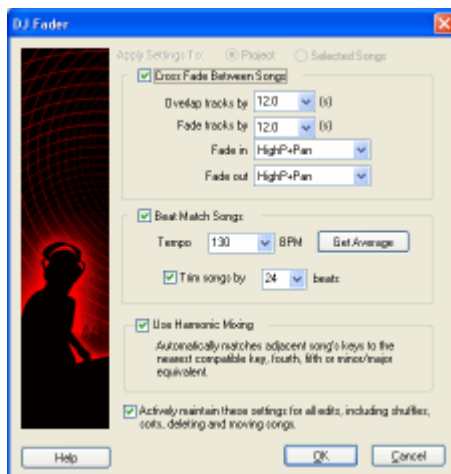
Beatmatched CDs

Practically anyone can burn a CD these days, but there are only a few that can burn a beatmatched CD where each song fades into the next song exactly on the beat!

The trick is to line up the start of one song with the end of another so that the beats line up. The software needs to automatically determine the tempo and then time stretch each song. Luckily, this is automatic in DJ Twist & Burn!

Set Up Your Project

Click 'New' on the toolbar or select "New Song List" from the "File" menu. Choose "Beat Matched Audio CD" and click "OK". Choose a master tempo, default fade times and fade types. If you want to mix harmonically, click "Use Harmonic Mixing"



Pick The Right Songs

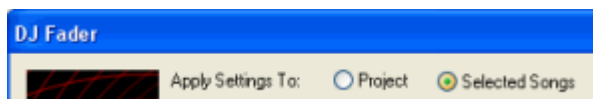
You can beatmatch any songs together, but you still need to pick songs that are at a similar tempo. It wouldn't make sense to beatmatch classical music against punk rock, for example. The software can be amazing, but you still need to choose good musical sets.

Pick A Tempo

Add your songs to the song list. Rearrange and sort the songs based on your aesthetics. Functionally speaking, you might want to try and group similar songs together.

T#	Title	Length	Tempo	Orig BPM
7	Holding On To Life	02:10	102.1	83.9
8	Real	01:50	102.1	84.9
9	Big Willie Style (Featurin...	02:14	102.1	85.1
10	I Can't Get Behind That	01:50	102.1	86.2
11	Common People	03:10	102.1	87.8
12	I Loved You	02:58	102.1	89.0
13	Y'All Know	02:47	102.1	90.5
14	The Leaving Song Pt. II	02:16	102.1	91.3
15	Chasing Forever	03:06	102.1	91.7
16	Yes Yes Y'All (Featuring ...	03:16	102.1	93.9
17	Just The Two Of US	04:10	102.1	94.6

In the picture above, I clicked on the "Orig BPM" column (Original BPM) to sort it by original tempo. I selected the first 5 songs by holding the Ctrl key down and clicking each song under 120 BPM. I then clicked the "DJ Fader" button on the toolbar. On the "DJ Fader" screen, it will either adjust things for all selected songs or the entire project. If there is a selection of more than one song, it will default to modify the selected songs.






Usually, you can time stretch songs by +/- 15 BPM without having the song sound too different. Therefore, you should artistically keep the song choice in a 15 BPM range, ie: 100 BPM to 130 BPM with a project tempo of 115 BPM.

Alternatively, you can beatmatch several groups of songs, by making selections and adjusting the tempo for those selections.

How Does It Sound?

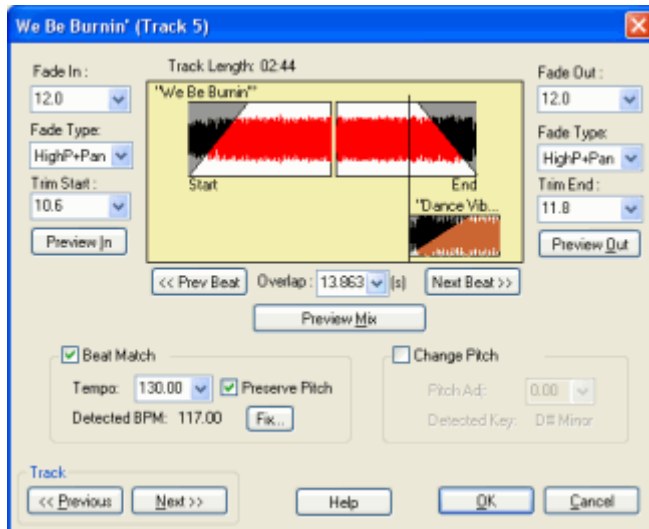
Click the play icon next to a song or double click a song to play it. To hear the transition to the next song, right click on the song and click "Preview Track Ending" or move the playback cursor to the end of the current song.

Each song that has been beatmatched will have an icon next to it.

-  This track has been time stretched
-  This track has been time stretched from 10% to 20%
-  This track has been time stretched more than 20% (It may sound wrong.)

Fine Tune The Mix

If the automatic settings don't work for a particular song, you can adjust it. Select a song and then click the "Mixing" button or right click on the song and select "Edit BPM/Pitch Settings" which brings up the following screen.



Two songs are shown on this window to illustrate the overlapping area. You can change the Fade In, Fade Out, Fade Types, Trim Start and Trim End of the current song. Set the exact overlap time in seconds or use the handy "Next Beat" or "Prev Beat" to align the mix to the closest beat point for automatic synchronization. (Remember, these controls are not measure aligned...so you may need to move 3 beats, depending on the time signature.)

You can uncheck "Beat Match" and the song will revert to its original speed/tempo. Or you can change the pitch if you don't like the automatic settings.

- Fade In - The time that the song fades in
- Fade In Type - The type of fade in. It can be volume, low pass, high pass, resonant and/or panning!
- Trim Start - The number of seconds to start the fade in at. (Useful for trimming out silence and non-danceable parts of a song.)
- Overlap- The amount of time that the two songs overlap.
- Fade Out - The time that the song fades out
- Fade Out Type - The type of fade out. It can be volume, low pass, high pass, resonant and/or panning!
- Trim End - The number of seconds to cut from the end of the song. (Useful for trimming out silence and non-danceable parts of a song.)
- Beat Match - Options to adjust the tempo of a song
- Pitch Change - Option to adjust the pitch or key of a song.

You can edit the settings for all the songs by clicking the "Previous" or "Next" button which loads the previous or next track. (In many cases, when perfecting a mix, you'll need to go to and from the settings of one track to the next.)

Listen To The Mix

If you want to hear how it will mix together, click the "Preview Mix" button. To hear the song's intro, click "Preview In". To hear the song's end, click "Preview Out". When you are happy with it, click OK.

Burn A CD

Put a blank audio CD in your CD recorder and click "Burn CD" from the toolbar. Click "Start" and after a few moments your beatmatched CD will pop out of the drive. (Note that it may take

longer to burn than normal CDs, because a lot of processing and complex audio rendering is happening at the same time. Be patient!)

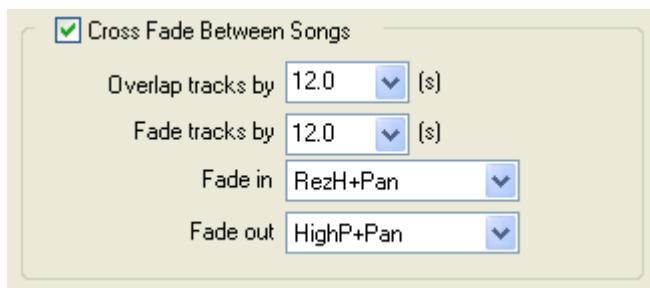
Beat Matching The Easy Way!

Crossfading Fun

In addition to beat matching your songs, you can create wonderful cross fades where each song blends into one another for a seamless song.

DJ Fader Cross Fade Settings

Each song can be automatically cross faded by default. When you set up a new project, make sure that the "Cross Fade Between Songs" option is checked. If you are already building a song list, click "DJ Fader" from the toolbar or select "DJ Fader" from the "Song List" menu. The DJ Fader window will come up. We will focus on the cross fading part for this help.



Choose a default overlap and fade time. I like to fade by overlap and fade by 12 seconds. My current favorite fade type is RezH + Pan, which is High Pass Resonant Filter with beatmatched panning!

Adding Songs To The Song List

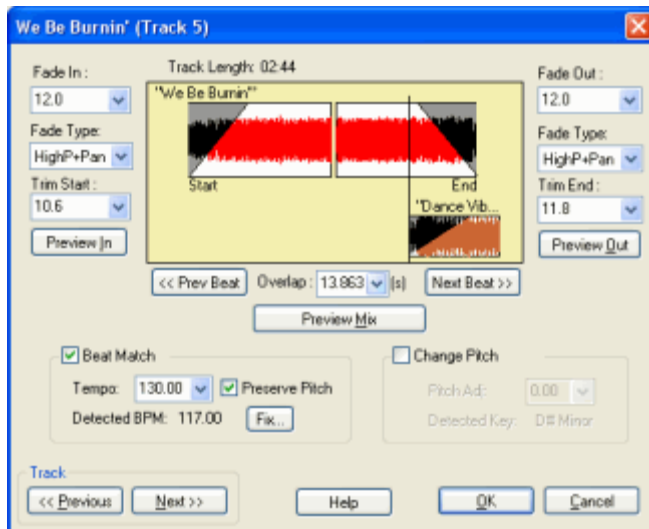
Add songs to the song list by ripping CDs or by adding audio files, such as MP3, OGG, WMA or WAV.

Listening To Your Cross Fades

What you hear is what you get. Listen to a song by clicking the play icon next to it or by double clicking. To hear how it will sound fading into the next sound, drag the play cursor to the end or right click on a song and select "Preview Track Ending"

Fine Tuning

If the fade isn't quite right and needs adjusting, click on the sound and then click on the "mixing" button on the right hand side. Or select "Overlaps, trims & fades" from the "Song List" menu. The following window comes up.



If the mix is clashing, you might try increasing the fade out of the current song. Adjusting the "Trim End" may also help. To edit the second song, click "Next >>" on the lower left hand area of this window. This will take you to the next song where you can edit the "Trim Start" and "Fade In". Then click "<< Previous" and click "Preview Mix" to hear how the overlapping area sounds. You will probably have to go back and forth in this manner to get the mix perfected.

Changing the Fade Type

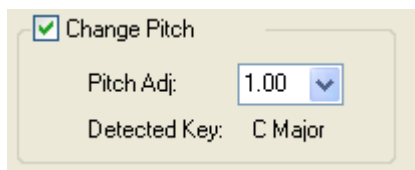
To add some real pizzazz, try changing the fade in and fade out types. Volume fades are old news. Try some filter fades or beatmatched panning fades! List of fade types available.

Changing A Song's Key

In addition to changing the tempo of a song, you can also change the pitch or key. When you add a song to DJ Twist & Burn, it analyzes the song's tempo and key. It will let you know the key and whether it is major or minor.

Changing the Pitch Or Key of a Song

It's really easy to change pitch or the key of a song. Click on the song and select "Edit BPM/Pitch Settings". Check "Change Pitch" and adjust the pitch by +/- 12 semitones. It generally sounds better to go down in pitch.



To adjust the pitch of all songs, click on the "Next >>" track and repeat the process. When you are all done, click "OK"

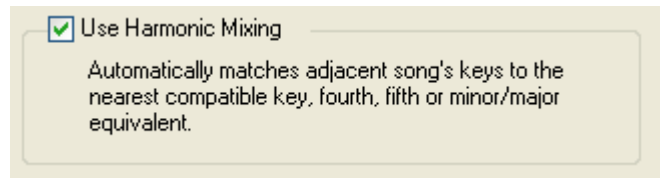
Harmonic Mixing

In most cases, matching the key of all songs in your song list would sound really bad or really

weird. For example, you might have to pitch adjust some songs by 7 semitones. The farther a song is pitched, the more unnatural it seems.

The second best scenario is a technique called "Harmonic Mixing", which matches adjacent songs by key, perfect fourth, perfect fifth or relative minor. This method results in songs that are transposed at a maximum of +/- 2 semitones, which is tolerable. The end result is an amazingly smooth mix from song to song!

To turn on Harmonic Mixing, click "DJ Fader" on the toolbar or click "DJ Fader" on the "Song List" menu.

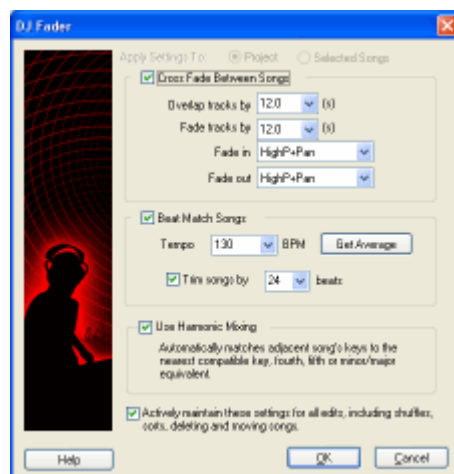


Making A Beatmatched MP3

MP3 players only play one MP3 at a time. And most MP3 players introduce a slight pause or gap between tracks. If you want a seamless, beat matched and cross faded song set, you'll need to create one large audio file. (This is a great option for those that want a strong tempo for working out and use MP3 players.)

Set Up Your Project

Click 'New' on the toolbar or select "New Song List" from the "File" menu. Choose "Beat Matched Song List" and click "OK". (Note that you don't have to create a beat matched CD.) Choose a master tempo, default fade times and fade types. If you want to mix harmonically, click "Use Harmonic Mixing"



Pick The Right Songs

You can beatmatch any songs together, but you still need to pick songs that are at a similar

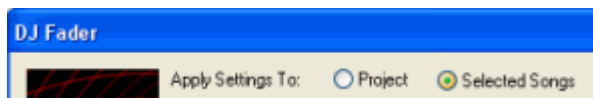
tempo. It wouldn't make sense to beatmatch classical music against punk rock, for example. The software can be amazing, but you still need to choose good musical sets.

Pick A Tempo

Add your songs to the song list. Rearrange and sort the songs based on your aesthetics. Functionally speaking, you might want to try and group similar songs together.

T#	Title	Length	Tempo	Orig BPM
7	Holding On To Life	02:10	102.1	83.9
8	Real	01:50	102.1	84.9
9	Big Willie Style (Featurin...	02:14	102.1	85.1
10	I Can't Get Behind That	01:50	102.1	86.2
11	Common People	03:10	102.1	87.8
12	I Loved You	02:58	102.1	89.0
13	Y'All Know	02:47	102.1	90.5
14	The Leaving Song Pt. II	02:16	102.1	91.3
15	Chasing Forever	03:06	102.1	91.7
16	Yes Yes Y'All (Featuring ...	03:16	102.1	93.9
17	Just The Two Of US	04:10	102.1	94.6

In the picture above, I clicked on the "Orig BPM" column (Original BPM) to sort it by original tempo. I selected the first 5 songs by holding the Ctrl key down and clicking each song under 120 BPM. I then clicked the "DJ Fader" button on the toolbar. On the "DJ Fader" screen, it will either adjust things for all selected songs or the entire project. If there is a selection of more than one song, it will default to modify the selected songs.






Usually, you can time stretch songs by +/- 15 BPM without having the song sound too different. Therefore, you should artistically keep the song choice in a 15 BPM range, ie: 100 BPM to 130 BPM with a project tempo of 115 BPM.

Alternatively, you can beatmatch several groups of songs, by making selections and adjusting the tempo for those selections.

How Does It Sound?

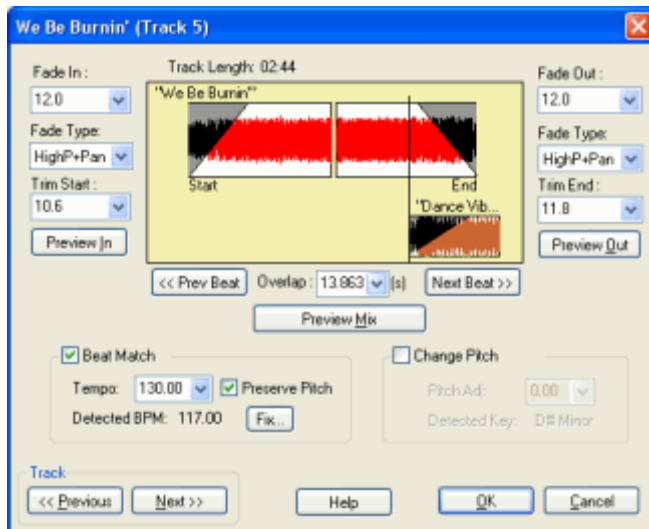
Click the play icon next to a song or double click a song to play it. To hear the transition to the next song, right click on the song and click "Preview Track Ending" or move the playback cursor to the end of the current song.

Each song that has been beatmatched will have an icon next to it.

-  This track has been time stretched
-  This track has been time stretched from 10% to 20%
-  This track has been time stretched more than 20% (It may sound wrong.)

Fine Tune The Mix

If the automatic settings don't work for a particular song, you can adjust it. Select a song and then click the "Mixing" button or right click on the song and select "Edit BPM/Pitch Settings" which brings up the following screen.



Two songs are shown on this window to illustrate the overlapping area. You can change the Fade In, Fade Out, Fade Types, Trim Start and Trim End of the current song. Set the exact overlap time in seconds or use the handy "Next Beat" or "Prev Beat" to align the mix to the closest beat point for automatic synchronization. (Remember, these controls are not measure aligned...so you may need to move 3 beats, depending on the time signature.)

You can uncheck "Beat Match" and the song will revert to its original speed/tempo. Or you can change the pitch if you don't like the automatic settings.

- Fade In - The time that the song fades in
- Fade In Type - The type of fade in. It can be volume, low pass, high pass, resonant and/or panning!
- Trim Start - The number of seconds to start the fade in at. (Useful for trimming out silence and non-danceable parts of a song.)
- Overlap- The amount of time that the two songs overlap.
- Fade Out - The time that the song fades out
- Fade Out Type - The type of fade out. It can be volume, low pass, high pass, resonant and/or panning!
- Trim End - The number of seconds to cut from the end of the song. (Useful for trimming out silence and non-danceable parts of a song.)
- Beat Match - Options to adjust the tempo of a song
- Pitch Change - Option to adjust the pitch or key of a song.

You can edit the settings for all the songs by clicking the "Previous" or "Next" button which loads the previous or next track. (In many cases, when perfecting a mix, you'll need to go to and from the settings of one track to the next.)

Listen To The Mix

If you want to hear how it will mix together, click the "Preview Mix" button. To hear the song's intro, click "Preview In". To hear the song's end, click "Preview Out". When you are happy with it, click OK.

Render An Audio File

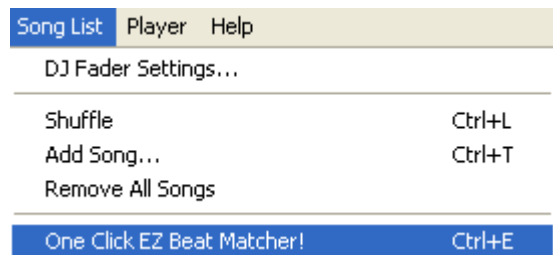
You are now ready to create an audio file. Save your song list first by clicking the "Save" button on the toolbar. Next, select "Render To File..." from the "File" menu. Choose a file type to create, such as MP3. Click on "Details" to change the format details, such as bit rate.

Choose a folder. Make sure that "Save As One Large Continuous File" is checked and fill in the title, artist, album, genre and year if you'd like. Click "Render" and after a few moments, your new beatmatched MP3 will be ready.

Beat Matching The Easy Way!

Beat Matching The Easy Way!

For those that want a really easy way to beat match their songs so that nothing is too stretched, all you have to do is click "One Click EZ Beat Matcher!" on the "Song List" menu!



This feature will automatically sort the list from slowest to fastest tempo and beat match sections of the song list for those that don't like messing around with the software too long. It adheres to the settings in the DJ Fader and will beat match a list even it isn't set up to do beat matching. (This is not available in MP3 CD mode.)

Keyboard Shortcut: Ctrl+E

The "One Click EZ Beat Matcher" command does the following:

- Sorts the list by original tempo. (To sort in the opposite direction, click it again and it will toggle from fast to slow or slow to fast)
- Each song will be within 10 bpm's from adjacent songs.
- It divides the song list up into beat matched "sections" or ranges, ie: beat match the first 10 songs to 90 bpm, the next 10 songs to 110 bpm, etc.
- Beat matches adjacent songs
- Fades and overlaps songs
- Harmonically mixes songs (If set in the DJ Fader dialog)

Usage

Choose the songs you'd like in your list. Click Ctrl+E or select "One Click EZ Beat Matcher!" on the "Song List" menu and you're done!

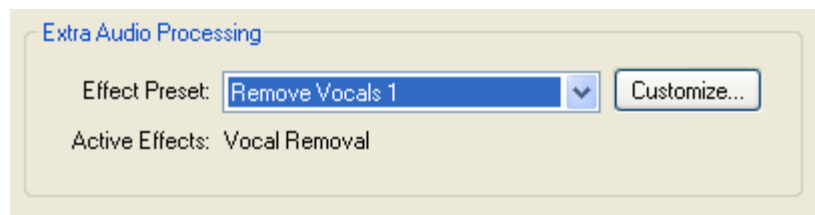
Making A Beatmatched MP3 - Creating A Beatmatched CD

Removing Vocals From A Song

Removing vocals from a song is not an exact science! The algorithms to do so are extremely cutting edge and in many cases it makes more sense to re-record the album or purchase a 'karaoke' version.

However, here is how you can do it in DJ Twist & Burn.

Select a song and click "audiofx" on the right hand side of the window or select "Adjust Song Volume/Boost/Effects" from the "Song List" menu.



Select a Meta Preset from the effects drop down such as "Vocal Removal 1". Click "Play" to preview the song without vocals. If it doesn't sound that great, try "Vocal Removal 2" or "Vocal Removal 3".

Vocal removal is an inexact science and will vary from song to song. It will almost never be perfect and you will have to experiment. Some songs work better than others.

You can also choose vocal removal, by right clicking on a song, selecting "Effects" and then clicking "Vocal Removal 1".

You can then burn a CD or render out an audio file and it will burn or render exactly as you hear it!

Tip: To remove vocals from all songs on the song list, click "Select All" from the "Edit" menu. Then click "Effects" on the "Song List" menu and select the desired Meta Preset.

More on creating and using effects

Making Songs Sound The Same Volume

When you add a song to DJ Twist & Burn, the software analyzes it to see if its volume is too low. If its too low, it will increase the volume so that it sounds consistent with other songs. There are at least three ways to balance the perceived loudness.

Automatic Loudness Balancing

DJ Twist & Burn will attempt to fix the volume levels of a song so that you do not have to constantly adjust the volume from song to song. This process will lower the volume of songs that are too loud. This algorithm is based off the [Replay Gain standard](#). This will cause the software to spend more time processing each song! You can turn this on or off in the Audio Preferences. To automatically balance an older saved song list, select "Balance Volume Equally Over All Songs" from the "Song List" menu after you have loaded the list!

Normalization

The entire song is analyzed for the highest sound signal. If it isn't at the maximum, the software increases the volume by the amount that would make the highest sound signal reach the maximum for digital sound. This will not introduce distortion, but it may not make any noticeable difference.

Boost

Boost is our buzz word for an audio compressor. You can use boost for recordings that can't normalize due to a maximum signal value somewhere in the song. Boost will make the lower volume parts of a song louder and the higher parts of a song lower. For example, newer recordings sound loud because they are usually boosted before being put on a commercial music CD. Older recordings are usually great candidates for boosting.

EQ

Studies show that humans are more sensitive to the frequencies from 2,500 Hz to 4,000 Hz. (Search the Internet on 'Fletcher-Munson Equal Loudness Curves' for more information.) You can try increasing or decreasing the equalization in this range by creating custom EQ setting for each song. See more on Using Effects.

Using Effects

Effects can enhance your songs, jazz them up or even remove vocals! DJ Twist & Burn comes with 7 built in effects: Delay/Echo, Reverb, EQ, Compressor, Flanger, Chorus, Distortion and Vocal Removal. There are three main ways of adding effects to a song.

Meta Presets

A meta preset is one or more effects in a combination effect. For example, one meta preset might be echo/delay, EQ and reverberation! To choose a meta preset, simply right click on a song, click "Effects" and then select the meta preset you'd like.

T#	Title	Length	Tempo	Orig...	Key	Orig...	Pt...
1	ZONK-Urban_Paradise	03:08	130.0	150.0	A Minor	A Minor	+0.1
2	Destination-Earth	07:54	130.0	136.0	A Minor	A Minor	+0.1
3	Dance Vibrations	01:56	130.0	130.0	E Major	F# Major	-2.0
4	Wedding	02:48	130.0	124.1	A Minor	A Minor	+0.1
5	We Be Bumini'	02:30	130.0	117.0	D Minor	D# Minor	-1.0
6	Dance Vibrations Millen...	02:05	130.0	130.0	F Minor	F# Minor	-1.0
7	Sudaka-I_Want_You	04:45	130.0	140.0	A# Minor	B Minor	-1.0
8	Sex_in_Dallas-Berlin_Ro...	03:50	130.0	126.0	C# Minor	C Minor	+1.0
9	Enjoy your life	02:...					
10	Sudaka-Flow	03:...					
11	Temperature	02:...					
12	(DON'T FEAR) THE RE...	06:...					
13	Sudaka-Play	02:...					
14	Hung Up (Radio Version)	02:...					
15	Ever Blazin' (Album Versi...	01:...					
16	Temperature (Album Ver...	03:...					

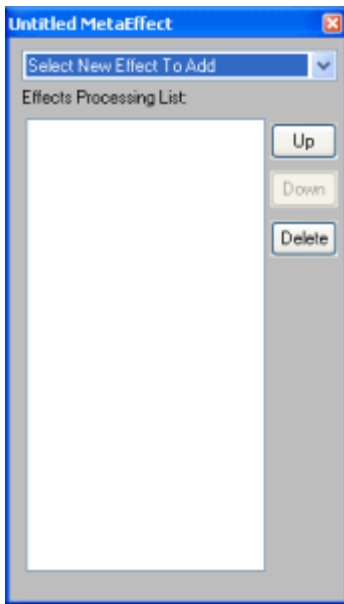
Tip: To change the effect for a bunch of songs at once, select them all by holding the Shift or Ctrl key down and clicking them or by selecting "Select All" from the "Edit" menu. Then right click on the selected songs and choose "Effects" and the desired Meta Preset.

You can also choose a meta preset by selecting a song in the Song List and choosing "Adjust Song Volume/Boost/Effects". Choose an effect from the drop down.

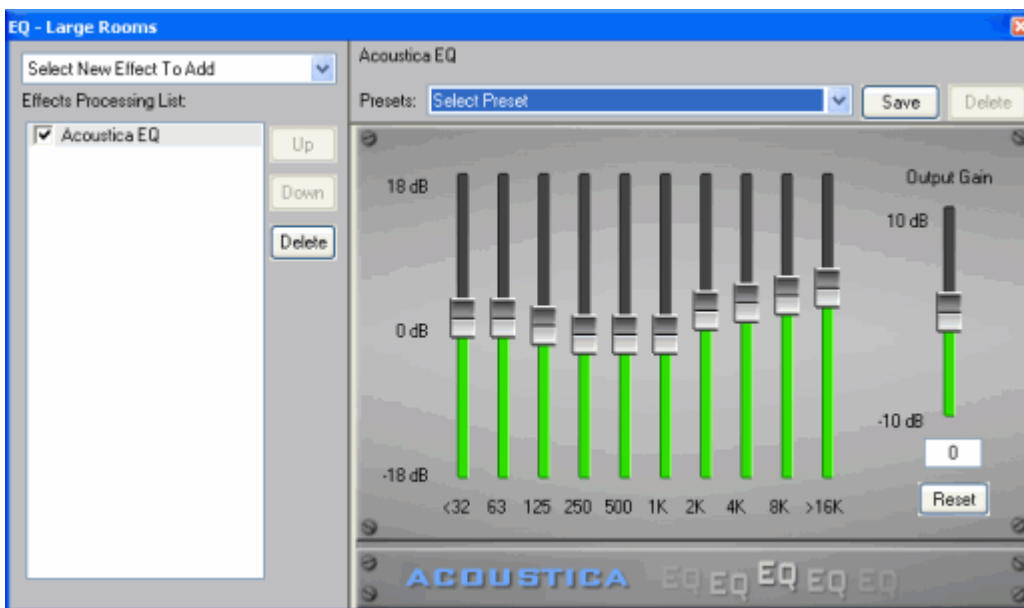
Create Your Own Meta Presets

Create your own effect presets if you can't find the right one in our default installation! DJ Twist & Burn will also support VST & DirectX effects, which you will need to turn on if desired via the preferences.

Right click on a song and select "Adjust Volume/Boost/Effects". To edit a preset, select the preset and then click "Customize". To create a brand new preset, select "<Create New Meta Effect>" which brings up the following Meta Effect window.

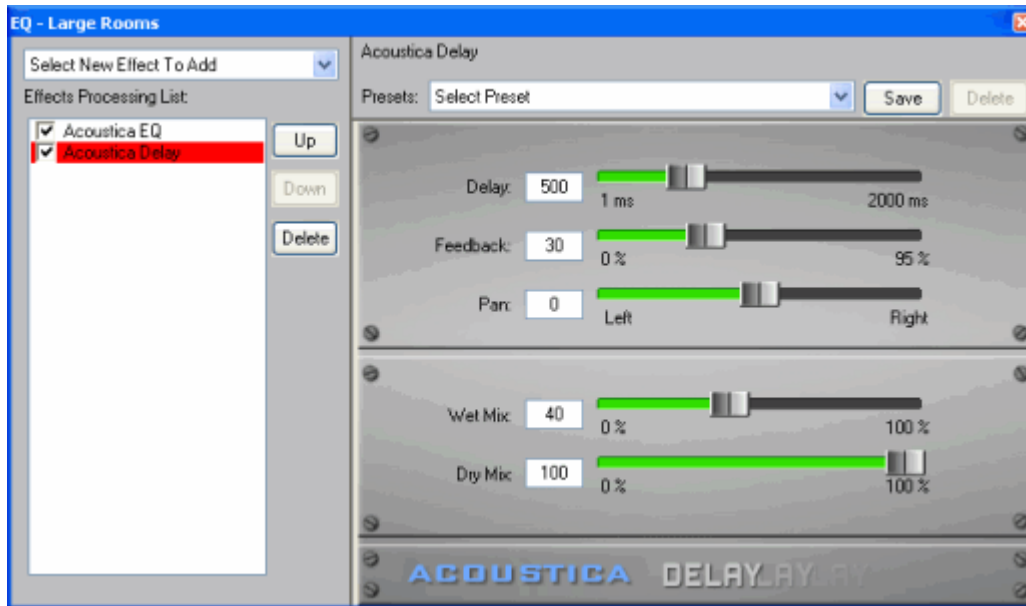


Click on the drop down control called "Choose A New Effect". Choose "EQ".



The left side of this window shows the selected effect and the right side lets you adjust the settings for the effect. In the case of EQ, we can adjust the various frequency bands and the output gain. Each effect will have it's own controls.

You can choose more than one effect. The effect on the left is the selected one. The order of effects also matters. You can adjust the order by dragging them up or down or by clicking the 'Up' or 'Down' buttons.



The selected effect, "Delay" is shown in red on the left and it's controls are on the right hand side. If you wanted to edit the EQ some more, you would click on "EQ" on the left side of the window.

When you are happy with your effect selections, click the little "X" button on the upper right hand side of the window. It will ask you to give the Meta Effect a name. Type in a name and you're done and your Meta Effect will now show up in the Meta Effect list!

Find Your Songs

There are many ways you can load songs into the software

Find them Add them Drag them in from Windows

Rip them Scan For Songs

Finding your songs

Find a Specific File

Find By Specific Directory or Folder

Find By File Type

Playing Your Found Songs

Sorting Your Found Songs

Edit Tag Info

Locate Song In Library

Delete a song from the Library

If you don't see the "Find Songs" window pictured below, click the button on the toolbar.

The software will first search your Music Library for matches. After that, it will scan your computer for new songs. As it finds new songs, it will add them to your Music Library and if it matches the query, it will show up in the results. Note that if you do not want it to scan your computer for new songs, that aren't already in your library, uncheck the "Search for new songs" item.

Find a Specific File

You can search for a song by its title, artist or genre. For example, if you are looking for songs by "Billy Bragg" you can type 'bragg' in the "Search for" field without the single quotes. Then press the 'Search' button.

Just click the songs you wish to add to the Song List to be burned to a CD. Once selected, the checkbox will appear checked and the text will turn blue. Or, alternatively, you can click the "Add Found>>" button to add all found songs to the Song List.

Find By Specific Directory or Folder

You may also search for songs by directory or folder name.

For example, if you had a bunch of music files in a folder called 'My Music', you could search for those files by typing 'My Music' in the "Search for" field. This is useful if you don't remember the exact name of a song, but know where it is stored.

Playing Your Found Songs

You can play and preview your songs directly from the Find window. Just click the button next to the song. See more on playback ...

Sorting your found songs

You can sort the songs by clicking one of the column headers. Click the column header again and it will sort it in the opposite direction.

The screen shot above shows where to click to sort by that column header.

Find By File Type

You can also select what file type you would like to filter the search by. For example, if you need to find WAV files, make sure to search on ".wav" or if you are looking for WMA files, search on ".wma".

Adding songs

If you know where your songs are, you can quickly add them directly into DJ Twist & Burn. To do this, click the "Add" button on the toolbar or the Add button on the right side. You can also select "Add Songs" from the "Song List" menu.

A standard window will pop up and allow you to navigate to your songs folder. Select one or many songs to load.

Drag them in from Windows

You can drag songs from a Windows folder and then drop them onto the DJ Twist & Burn window.

To do this, double click "My Computer" and navigate to the folder with your MP3s. Highlight one or many MP3s. Click on the blue or selected area of one of the files and then move the mouse over the DJ Twist & Burn window. When the cursor has a + underneath it, you should release the mouse and your files will be imported.

In addition, you can drag entire folders in! The software will automatically create folders and load in all the contained songs, including songs in sub-folders.

Edit Tag Info

You can edit a track's tag information (track name, artist, album, genre, year or comment) by right clicking the song and selecting "Edit Tag Info" from the right click menu. This brings up the Edit Tag Info window.

Locate Song In Library

You can quickly locate a song in your music library by right clicking on a song and clicking "Locate Song In Library" from the right click menu. This will cause the library tab to be displayed and the track will be highlighted in gray.

Delete from Library

This is a useful option if you find a song, which you would not like to show up in your search results. Rather than go into the library tab to delete it, you can click "Delete from Library" on the right click menu, to have it removed. Note that you will still need to go to the Library menu and select "Empty Trash" to permanently remove it.

Your Music Library

The Music Library will contain all the songs on your computer, which includes:

- Songs you downloaded
- Songs from CDs you ripped.
- Recordings you created
- Anything in MP3, OGG, WMA or WAV format that is longer than 1 minute (1 minute is the default minimum length and can be changed in the Preferences.)

Any changes made can be undone if you make a mistake. Simply click "Ctrl+Z" to undo and "Ctrl+Y" to redo any changes.

If you don't see the "Music Library" window pictured below, click the button on the toolbar.

Scanning For Songs Browsing Your Library

Retagging Your Songs Quick Retag

Deleting Songs Playing Songs in the Music Library

Clean Library Delete Library

Scanning For Songs

The software will automatically look for new songs on your computer. If you have downloaded or copied new songs to your computer, you'll need to scan them into DJ Twist & Burn.

Click the "Scan" button to start scanning for eligible songs. By default, it will look for MP3,

WMA, OGG & WAV files over 1 minute in length. You can change where and what it scans by changing the "Sound Scan" Preferences.

Browsing Your Library

You can browse your library in 2 ways:

By Artist and album

(Sting, Alanis, Bach, Toad, Miles Davis, etc.)

By Genre (or style)

(Jazz, Blues, Rock, Classical, etc.)

To browse by artist, click the + sign by the "Browse by Artist" item. It will expand and show you all of your artists. Then click the + near an artist you'd like to expand and it will show you all albums and songs under that artist.

The above shows the Music library in action. In this case we have selected 4 songs under "Alicia Keys".

Retagging Your Songs

In a perfect world, we wouldn't have to do retag our music, but in many cases the songs that you download or rip aren't titled or tagged correctly.

Simply right click on a song to correct any erroneous information and the following dialog box will appear.

You can edit the song information for individual songs this way.

Title (The name of the song)

Artists (self explanatory)

Album (self explanatory)

Year (The year the CD was made.)

Track (original track number on the album)

Genre (The style of music)

Comment (Whatever you'd like)

In addition to editing a single song, you can correct albums and artists by right clicking on them and editing their information.

Quick Retag

One of the neatest tricks in quickly retagging or fixing your music library is by *drag and drop*.

In this example, I have 2 albums related to Sting. One is lower case and one is upper case. I simply click on 'sting' and drag it onto 'Sting' with the capital S, and viola, the small case 'sting' and all of it's songs and folders are automatically retagged to be correct.

You can also do this with individual songs or albums or for reorganizing by genre.

Deleting Songs

You can use the Music Library to clean up songs that you don't want. Simply right click on an artist, album or song and click "Delete". Alternatively, you can drag and drop artists, albums or songs onto the trash icon.

If you accidentally delete a song, simply click "Ctrl+Z" for undo. (Alternatively, you can select "Undo" from the "Edit" menu.)

Deleting these songs do not delete them permanently from your hard drive. They are simply in the DJ Twist & Burn 'trash'. To permanently remove these songs, albums and artists, click "Empty Trash" on the Trash icon or by clicking "Empty Trash" from the "Library" menu.

What happens when you click "Empty Trash"? There are 3 options.

The first choice will actually move the songs into the Window's "Recycle Bin". **** BE WARNED AND BE CAREFUL - Some of the sounds could be important to some programs and games on your computer and could cause them not to run properly. Make sure that these songs are ok to delete! Acoustica cannot be held responsible for any lost sound files that are deleted this way.**** The final step is to go right click on your Window's Recycle Bin and select "Empty Recycle Bin"

The second choice removes the song(s) from your library, but does not remove the songs from your computer. After removing it, it brings up the Preferences "Sound Scan" screen which allows you to add a directory to the "Exclude List" so that the song is not re-scanned. Why would you do this? If the sound scan is picking up songs from a game for example, you can add the game directory to the "Exclude List". IE: If you had a ton of songs from a game located at C:\Program Files\Star Wars\ then you could simply add this directory and they won't be picked up again in the next scan!

The third choice simply removes the song from the library. The next time a sound scan occurs, it will re-import the song!

Playing Songs In Your Library

Once you've amassed a collection of songs, it's nice to be able to play them! Simply click the play icon to start a song playing.

Playback modes

Continuous play - will automatically advance to the next song.

Random play - If continuous play is on, the next song will be a totally random selection from anywhere in your library.

I like to play in continuous and random play to keep things fresh when I'm working along. ☺
For more on playback, click here.

Cleaning The Library

Get out the broom and dustpan! ☺ Not. This process simply removes any songs that can no longer be found on your computer. (They've either moved or were on a temporary device like network drive, CD drive, etc.) To clean your music library, select "Clean Library" from the "Library" menu.

Deleting The Library

If you've imported a bunch of songs that are of the wrong length, or wrong directory, it's sometimes easier to just start over and delete the library. Select "Delete Library" from the "Library" menu. (Note that this will cause the software to restart, so you'll need to save any work.)

Arrange Your Songs

Once you have found your songs, you can rearrange their order in a few different ways.

Moving Songs
 Shuffle
 Sorting
 Deleting Songs
 Adding Songs
 Playing Songs

Undo & Redo
 Copy & Paste
 Copy Track Information

Setting Song Volume/Boost/EQ
 Trimming/Fading/Mixing Songs

Open Containing Folder
 Edit Tag Info
 Locate Song in Library
 Delete a Song from the Music Library

Special Icons

This screen shot shows the "Song List" interface.

T#	Title	Length	Tempo	Orig...	Key	Orig...	Ptc...	Time...	Effects	Album	Artist	Status	Location
13	freetime/Martini Ranch ...	03:19	130.0	134.0	A Major	A# Major	-1.0	103.1%	None	freetim...	Kenna	Ready	C:\Documents and Settings\Joseph\My C...
14	Temperature	02:53	130.0	125.0	A Major	A# Major	-1.0	96.1%	None	The Tri...	Sean P...	Ready	C:\Documents and Settings\Joseph\My C...
15	O.G. Bitch (Blow Up Ps...	03:46	130.0	116.0	A Minor	B Minor	-2.0	89.2%	None	O.G. Bi...	Esthero	Ready	C:\Documents and Settings\Joseph\My C...
16	Filly Mind (Peter Rauho...	06:32	130.0	129.8	C Major	B Major	+1.0	99.8%	None	Singles...	Amand...	Playing	C:\Documents and Settings\Joseph\My C...
17	Sudaka-I_Want_You	04:45	130.0	140.0	C Minor	B Minor	+1.0	107.7%	None			Ready	C:\Documents and Settings\Joseph\My C...
18	Pop A Cap In Yo' Ass (F...	05:33	130.0	126.0	C Minor	B Minor	+1.0	96.9%	None	Outspo...	Ben Walt	Ready	C:\Documents and Settings\Joseph\My C...
19	Le Tigre - Alter Dark (N...	05:54	130.0	133.0	C Minor	C Minor	+0.0	102.3%	None	Alter D...	Le Tigre	Ready	C:\Documents and Settings\Joseph\My C...
20	Sudaka-Flow	03:41	130.0	90.0	C Major	C Major	+0.0	69.2%	None			Ready	C:\Documents and Settings\Joseph\My C...
21	Hung Up (Radio Version)	02:31	130.0	125.0	C Minor	D Minor	-2.0	96.2%	None	Hung Up	Madonna	Ready	C:\Documents and Settings\Joseph\My C...
22	Banquet (Phones Disco ...	05:29	130.0	150.1	D# Minor	D Minor	+1.0	115.5%	None	Silent A...	Bloc P...	Ready	C:\Documents and Settings\Joseph\My C...
23	Ever Blazin' (Album Versi...	01:58	130.0	103.9	D# Minor	D Minor	+1.0	79.9%	None	Ever Bl...	Sean P...	Ready	C:\Documents and Settings\Joseph\My C...
24	Jetstream - Richard X R...	06:44	130.0	126.0	D# Minor	D Minor	+1.0	96.9%	None	Jetstre...	New Or...	Ready	C:\Documents and Settings\Joseph\My C...
25	Love Is A Number - Paul...	01:55	130.0	80.0	D# Minor	C# Minor	+2.0	61.5%	None	Love Is...	White ...	Ready	C:\Documents and Settings\Joseph\My C...
26	Oh My Gosh (Radio Edit)	03:06	130.0	127.0	F# Major	F Major	+1.0	97.7%	None	Oh My ...	Basem...	Ready	C:\Documents and Settings\Joseph\My C...
27	Stupidisco	04:20	130.0	125.0	D# Major	D# Major	+0.0	96.2%	None	Trust it	Junior J...	Ready	C:\Documents and Settings\Joseph\My C...
28	'We Be Bummin'	02:24	130.0	117.0	D# Minor	D# Minor	+0.0	90.0%	None	The Tri...	Sean P...	Ready	C:\Documents and Settings\Joseph\My C...
29	Depeche Mode - Precio...	04:06	130.0	129.0	D# Minor	D# Minor	+0.0	99.2%	None			Ready	C:\Documents and Settings\Joseph\My C...
30	Precious (DJ Dan 4 A.M...	04:08	130.0	129.0	D# Minor	D# Minor	+0.0	99.2%	None	Precious	Depec...	Ready	C:\Documents and Settings\Joseph\My C...
31	Only This Moment (Chab...	06:03	130.0	125.1	F# Major	F Major	+1.0	96.2%	None	Tales ...	Roykso...	Ready	C:\Documents and Settings\Joseph\My C...
32	Retreat Phones Remix	05:30	130.0	137.0	F# Minor	G Minor	-1.0	105.4%	None	Retreat...	The Ra...	Ready	C:\Documents and Settings\Joseph\My C...
33	Sex_in_Dallas-Berlin_Ro...	04:04	130.0	126.0	B Minor	C Minor	-1.0	96.9%	None			Ready	C:\Documents and Settings\Joseph\My C...
34	10 Dollar (Explicit)/Explic	03:08	130.0	121.0	A Major	G# Major	+1.0	93.1%	None	Arular [...]	M.I.A.	Ready	C:\Documents and Settings\Joseph\My C...
35	'We Be Bummin'	02:56	130.0	117.0	D Minor	D# Minor	-1.0	90.0%	None	The Tri...	Sean P...	Ready	C:\Documents and Settings\Joseph\My C...

Audio CD

This is the type of CD that plays in 100% of all CD players. This is the kind of CD that you buy at the music store. You are limited to 21, 74 or 80 minutes of audio. (Note that you can't have more than 100 different tracks, which is a limit of the audio CD spec.) If you leave it on "Auto", put in a blank CDR before starting a burn and it will automatically detect how much room you have.)

MP3 CD/DVD

The MP3 CD stores actual MP3, or WMA files just as if they were on a hard drive. It is not readable by normal CD players. However, if you have an MP3 CD player, you will be able to play up to 200 songs on a single CD!

The number of songs that you can fit on a MP3 CD depends on how big the songs are in terms of MB, instead of length in time.

The above shows the how the "Song List" looks when you choose "MP3 CD". The top window shows your folders and the bottom window shows the contents of the currently selected folder.

You can do the following things in "MP3 CD" mode.

Create and rename folders

Move folders by dragging them to new parent folders.

Move songs from one folder to another by selecting them and then dragging them to a new folder above.

Select from 185 MB, 650 MB, 700 MB CDs, or 4.7 GB DVD project sizes.

The first time you select "MP3 CD" mode, you will start the MP3 CD wizard which lets you choose the best settings for your MP3 CD, including bit rates & audio formats that your player supports, file order preservation and folder options. You can also change these settings in the "MP3 CD" section under the Preferences.

See MP3 CD Wizard

Moving Songs

To move a song, click on it and then drag it to the new position. You will see a blue underline, which shows where the song will move once the mouse is released.

Alternatively, you may use the up arrow or down arrow to move the selected song(s) up or down.

In "MP3 CD" mode, you can also drag songs above into a different folder.

Shuffle

Shuffle is a quick way to arrange your tracks into a new random order. To shuffle your tracks, select "Shuffle" from the "Song List" menu.

DJ Fader

You can fade and beat match songs when in "Audio CD" mode. When in "Audio CD" mode,

click the "DJ-Fader" button  launch the DJ Fader dialog.

Sorting

You can sort by each column header by clicking on it. Here are the columns you can sort by.

Title - The title track of the song.

Length - The length of the track.

Status - Ready, Preparing, Converting, Burning, Burned, Missing, etc.

Album - The album for the track.

Artist - The artist.

Genre- The style or genre of the track.

Type - The file type (WAV, WMA or MP3).

Format - The bit-rate or sample rate of the track.

Size - The size in bytes, KB or MB of the track.

Track # - The CD track # that corresponds with the original CD track, usually.

Location - The folder and file name.

Deleting Songs

You can delete a song by clicking the song followed by selecting "Delete" or "Cut" from the "Edit" menu **[Ctrl+X]**.

Alternatively, you can also press the Del button or press the **[Delete]** key to delete a track.

To delete all the songs in your list, select "Remove All Songs" from the "Song List" menu.

Undo & Redo

Make a mistake? You spent all day looking for a specific song and you just deleted it! No problem! Select "Undo" from the "Edit" menu and your song will re-appear. **[Ctrl+Z]**

You can then re-do what you just 'undid' by selecting "Redo" from the "Edit" menu. **[Ctrl+Y]**

Copy & Paste

If you want to have more than one instance of a particular track, select the track and then select "Copy" from the "Edit" menu **[Ctrl+C]**. To paste a copy, select "Paste" from the "Edit" menu. **[Ctrl+V]**.

When you paste to an external program, such as a CD label creation package, it will paste the textual track information such as track name, artist and length.

Setting Song Volume/Boost/EQ

This allows you to change the overall strength, volume and tone of a song. It will be burned to CD as you hear it. Click the "Audio FX" button or right click on a song and select "Adjust Track Volume/Boost/EQ" This brings up the Volume/Boost/EQ dialog.

NOTE: Use this option sparingly as you may introduce distortion. If all your songs sound low in volume, you should simply turn up your speakers or adjust your Window's volume mixer.

Trimming/Fading/Mixing Songs

This allows you to do some limited editing with your songs. You can trim them to get rid of unwanted applause or long silence intros. You can fade songs and overlap them with adjoining songs for seamless mixes. Click the "Mixing" button or right click on a song and select "Overlaps, Trims & Fades". This brings up the Overlaps, Trims and Fade dialog.

NOTE: If you are creating an MP3 CD, the software will ignore the overlap setting and only burn the trims and fades. (MP3 CD Players do not support continuous play without pauses.)

Open Containing Folder

This is convenient if you want to open the folder in Windows where the song is stored. You might use this if there is a song in your library which you wish to delete or rename.

Right click on a track and then select "Open Containing Folder" from the pop up menu.

Alternatively, you can select "Open Containing Folder" from the "Song List" menu when the track is selected.

Playing Specific Songs From the Arrange Window

Each track has a playback button that will start playback for that track.

The above screen shot shows where the playback button is.

Click here for more on playing songs.

Copy Track Information

Each track has associated track information such as the track number, the track name, the artist and the track length. You can copy this text into the clipboard in order to use it in other programs such as CD label makers.

To copy the track information of a specific track, click the track to select it. Then select "Copy" from the "Edit" menu [**Ctrl+C**]. Now go to your favorite program and paste it in by selecting "Paste" from the "Edit" menu [**Ctrl+V**].

You may also select multiple tracks by holding down the Shift or Control key and clicking the desired tracks. Once you have made your selections, click "Copy" from the "Edit" menu to copy them.

To copy all track information, just select "Copy Track Information To Clipboard" from the "Edit" menu.

Edit Tag Info

You can edit a track's tag information (track name, artist, album, genre, original track, year and comment) by right clicking the song and selecting "Edit Tag Info" from the right click menu. This brings up the Edit Tag Info window.

Locate Song In Library

You can quickly locate a song in your music library by right clicking on a song and clicking "Locate Song In Library" from the right click menu. This will cause the library tab to be displayed and the track will be highlighted in gray.

Delete from Library

This is a useful option if you find a song in your song list, which you accidentally imported from a search or the library tab. Rather than go into the library tab to delete it, you can click "Delete from Library" on the right click menu, to have it removed. Note that you will still need to go to the Library menu and select "Empty Trash" to permanently remove it.


Special Icons


Each track may have some special icons next to the track #

This track has been boosted to have a higher perceived volume.

This track may be incomplete.

 This track has been time stretched

 This track has been time stretched from 10% to 20%

 This track has been time stretched more than 20% (It may sound wrong.)

Play Your Songs

The playback controls are shown below.

Use this button to rewind the current song and start playback from the beginning. If less than 4 seconds have played, it will start playback of the previous song.

Use this button to start playback of the next song. (Find or Arrange window.)

/ Use these buttons to start and stop playback.

You can use the slider to restart the playback from a given offset.

Playback Modes

There 2 modes when playing back songs.

Continuous - This mode will play songs indefinitely. If it reaches the end of a song list, it will start over from the beginning.

Random - If in continuous mode, this will cause a totally random song to play next.

The song that the software will choose to play next will be from the last window that they clicked the button on. For example, if you click the button on the Music Library window, then the subsequent songs will be picked from the Music Library. Note that if there is only 1 song in the active window, such as the Find or Song List window, then that song will play continuously. (You never know, someone out there may have intended that. 😊)

Songs can be set up to fade from one to another, as well. For more info on this see Cross Fading Fun or the DJ Fader Dialog

Rip Your CDs

Ripping is the process in which you can copy audio track(s) from your personal CDs.

You can rip an individual song or all the tracks from a CD. To rip a CD, click on the "Rip CD" toolbar button or click a CD tab. (These tabs are above the playback controls and would be called CD Drive D or CD Drive E, depending on your computer's setup.)

After you have the CD ripping window up, you should put in a music CD to rip.

NOTE: Another program may pop up and try to play it or record it, but you should click it away.

There are several phases to ripping a CD:

1. Identify Your CD Automatically! (Or Manually)
2. Select Your Songs To Rip
3. Rip Your Songs
4. Speed Rip

(The above shows the CD Ripping area with 9 unidentified tracks.)

If you are having problems ripping, see the troubleshooting area.

Identify Your CD

DJ Twist & Burn will automatically attempt to locate your CD through the Internet! The software will attempt to connect with a "FreeDB" server to get the information.

Note that you may want to switch to a closer freedb server via the Preferences.

Make sure that you are connected to the Internet before this process starts. (It will attempt to connect to the freedb 3 times.) There are a few different outcomes depending on the situation.

1. Your CD is identified without any problems. (*The best*)
2. Your CD is identified, but there are several possible matches.

(In this case, select the appropriate album and then click OK)

3. Your CD is identified, but there is some missing information such as the year of the CD or the genre of the CD.

(If this is the case, it will ask you if you'd like to fill in the missing info.)

4. A match could not be found and you have to enter in the information by hand! Even this process is relatively easy!

To enter in the CD information by hand, right click on a CD track and select "Edit Tag Information". The interface is set up so that you can enter in the artist, album, year and genre once and then simply type in each track name without leaving the window.

- a. Click on the Artist area and type in the artist's name.
- b. Press tab to get to the Album field or click Album and enter the album name.
- c. Repeat this process for Year and Genre.
- d. Then click the Title edit box and enter the title for the track
- e. To get to the next track, simply click "Next >>" or Press the ALT button and the 'N' key

f. Continue until all tracks have been named and then Click the Save button!

The "Look Up" button can be used to try to identify the CD later in case the Internet was not active or the freedb server was busy, etc.

In some cases, the artist, album or track information that comes back will be partially wrong or totally wrong. If this is the case, you should manually edit it to be correct.

Select Your Songs To Rip

This is as simple as clicking the song so that it is "checked"

By default, DJ Twist & Burn selects all songs to rip.

If you only wish to rip 1 or 2 tracks, simply right click on CD track list and select "Deselect All Tracks". Then click the tracks that you'd like to rip.

If you have already ripped a track and wish to rip it again, you can click "Mark all tracks as 'un-ripped'" which will allow you to re-rip the track.

Rip Your Songs

This is as simple as clicking the "Rip Tracks" button on the window (or Ctrl+R). Your songs will be ripped in the MP3 format by default. To change the format, you should go into the Preferences. (MP3, OGG, WMA and WAV can be selected.) If the "Add ripped songs to Song List" is checked, the song will be copied to the Song List once it is completed.

Freshly ripped songs will automatically be added to your library. The following image shows a rip in progress.

An orange color represents that a track has been ripped.

Problems can crop up when ripping! In some cases, you may have pops or artifacts in the ripped track and in other cases; it may not be able to rip a track. Here are some things to try.

Clean the CD, especially if it is dusty or has spilt milk on it. ;-)

If you have 2 CD drives, try ripping it in the other CD drive. (Some drives are more tolerant of errors than others.)

If there is a lot of popping, run an anti-pop or click removal software program. (It may not help all cases, though.)

Shut down other programs, including screen savers and virus checkers to free up your computer's resources.

Try ripping to WAV format, instead of MP3 or WMA. (This requires less computer power.)

Change your ASPI layer. If you are using Acoustica, try unchecking it to use the default Window's ASPI layer.

Try changing some of the ripping preferences in the Preferences.

- Changing Jitter from 'Auto' to "ON" may help. (It will also go slower)
- Lowering the rip speed may help with errors
- Changing the error correction to retry more times may help as well.

Speed Rip

If you are interested in ripping CDs as **fast as possible** and size is not an issue, you should choose this option. IE: You have lots of available hard drive space, you should choose to rip to WAV files. Note that you will use up about 10 MB per minute of audio.

Go into the Preferences by clicking *Preferences* from the *File* menu. Click the "Ripping Tracks" item and then click "Temporary WAV files only" or change the setting in "Store in format" to WAV.

Burn A CD!

You've got your songs arranged the way you want. You are ready to create your custom CD! Note that you will have to have a supported CD recorder in order to burn a CD or DVD.

Note: Did you want to burn an MP3 CD or an Audio CD? You can select this and the media size on the Song List screen. More ...

Blend or Mix Adjacent Tracks Radio DJ style!
Selecting Too Much Audio
Burn Options
Burn Process

Blend or Mix Adjacent Tracks Radio DJ Style!

****This only applies to "Audio CD" mode.**** You can create a CD where the tracks mix into each other. Click "Cross Fader Settings" from the "Song List" menu or click the "DJ Fader" button on the toolbar. See the DJ Fader dialog for more information.

Selecting Too Much Audio

After clicking "Burn CD!" from the "Song List" menu or clicking the "Burn CD" button on the toolbar, you may see a window titled "Selected Audio Will Not Fit!"



If you have more than maximum minutes of audio selected, you can do one of three things.

1. Fade out the extra audio. Choose the length of the fade. The default is 2 seconds.
2. Cut off the extra audio. It may not sound graceful...but the option is available.
3. Cancel the dialog and remove some tracks and then try to burn again.

Burn Options

After clicking the Burn button, the "Burn Audio CD!" window comes up with several options that you can set. To start burning, click the "Start" button.

Burner Speed

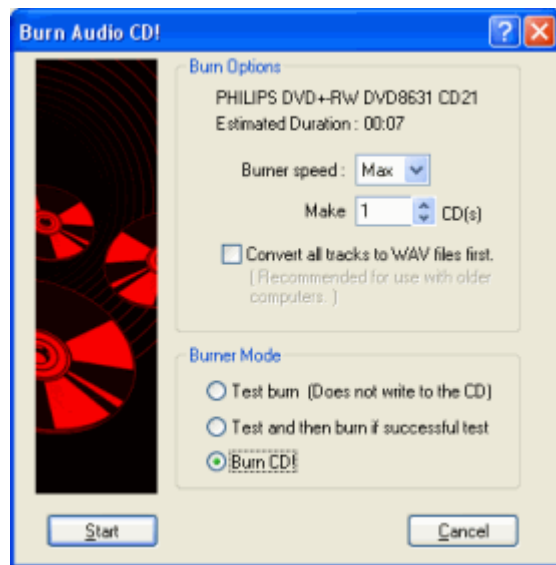
Number of Copies

Convert All Tracks To WAV Files First

Test Burn Mode

Test And Then Burn Mode

Burn CD Mode



CD Burner Options

Convert all tracks to WAV files first.

****This only applies to "Audio CD" mode.**** This option will ensure that *all tracks* are first converted to WAV files before being written to the CD. You are required to check this option if you are mixing between tracks.

Burner Speed

This defaults to "Max" which is the maximum speed possible on your CD recorder. 1X speed recording is comparable to the amount of time necessary to playback an audio CD. Since an audio CD holds 74 minutes, it will take 74 minutes to record an entire CD at 1X speed. An 8X speed recorder will take 74/8 minutes, which is about 9 minutes. If you are lucky enough to have a 16X speed burner, it will take about 4.5 minutes to record an entire CD!

If you are having problems recording a CD or if you wish to do other things during a burn, such as browsing the web, you should choose a lower burn speed.

Make (Number Of Copies)

If you are making more than one copy, change this control to the number of copies you wish to make. You will be prompted to insert the blank audio CDs when needed

CD Burner Mode

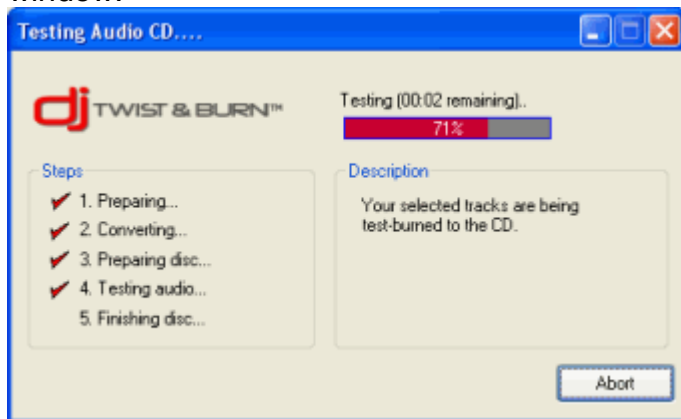
Test burn. A test burn will simulate an actual burn without using a blank CD-R. You will be required to put a CD-R in, but it will not use the burn laser on the CD-R. It is mainly a test to see if the data can be delivered to the CD recorder quickly enough to avoid 'data starvation' or the famous 'buffer under run' error.

Test and then burn if successful test. This will perform a test and then if the test goes smoothly, it will start the burn without any user interaction.

Burn CD! This will go straight to burning an audio CD. (No tests will be performed in this mode.)

Burn Process

The burn process involves a few steps. The screen shot below shows the burn/test progress window.



The burn process consists of several stages.

1. All audio files must be "Prepared". DJ Twist & Burn analyzes all songs to determine the exact length.
2. Some or all tracks will be converted to WAV files first. The tracks may be converted if they need to be normalized or auto-trim settings or trimmed. See the Preferences to set these parameters.
3. Burn or test begins.
4. Each track is burnt or test-burnt.
5. Burn or test finalizes.

You can abort at any time by clicking on the "Abort" button. If burning, aborting after stage 3 will result in an unusable CD. (DJ Twist & Burn will ask you if you are sure you want to abort, though.)

Mix Down/Render To Audio File

If you want to mix down the entire song list to a single file or series of files, select "Render To File..." from the "File" menu. You might want to do this, if you want to change the format of some songs or create a continuous mix MP3 for your portable MP3 player, such as an iPod. Click "Render" to render the song list to audio file.



Tip: If DJ Twist & Burn does not support your CD recorder, one option is to mix down to multiple WAV files and then import them into a program that is compatible with your CD recorder to do a burn.

Audio Format

Choose from MP3, WMA, WAV and OGG. Click Details to change options for the selected format, such as bit rate, channels, etc.

Folder

This is folder where the mixed file or files will go. The "Space Available" items reflect the space available on the folder's hard drive. Type in a new folder or select a new folder by clicking "Choose..." (If the folder does not exist, DJ Twist & Burn will ask you if you want to create it.)

Save As One Large Continuous File

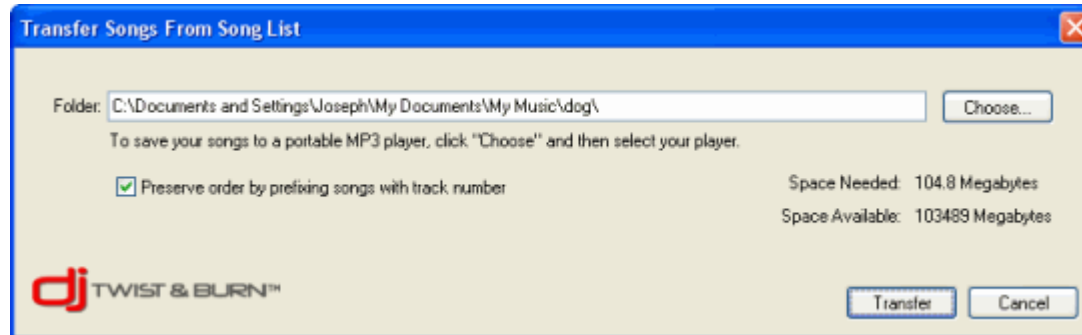
If this is checked, it creates one huge mega-mix, exactly as you hear it. Fill in the track title, artist, album, genre and year for appropriate tagging. If this is unchecked, it uses the tag information from each track in the song list.

Tip: If rendering to multiple files, the playback software or player will most likely introduce gaps of silence during playback and, therefore, the transition may not sound great. (Render it as one continuous file, if in doubt.)

(If you want to get your songs onto a portable MP3 player or a folder as quickly as possible and don't care about edits such as trims, fades, beat matching and effects, you should use the Transfer Song List feature, instead!)

Transfer Song List To MP3 player/folder

Everyone has a portable MP3 player these days. To quickly move all songs to a folder or your portable MP3 player, simply select "Transfer Songs..." from the "Song List" menu. Click "Transfer" to transfer the songs in the Song List.



Folder

Type in a new folder or click "Choose..." to select a folder or MP3 player. (Not all MP3 players allow you to transfer directly to them. If that is the case with your MP3 player, choose a temporary folder and after transferring, add them in the appropriate way for your MP3 player.)

Preserve order by prefixing songs with track number

Some MP3 players have no way of setting the playback order. This option will force the song list into alphanumeric order by prefixing the track number to the beginning of the song's file name.

(If you want to preserve any edits such as beat matching, pitch change, effects, boost, etc, you'll need to render or mix down to an audio file, instead.)

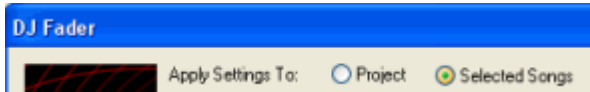
DJ Fader Dialog

These project settings determine whether songs are beatmatched, faded or transposed automatically. The DJ settings are applied when new songs are added to the song list or when you click OK.



Apply To Project / Selected Songs

The changes you make will be applied to the current selection or the entire project depending on the value.



Cross Fade Between Songs

If this option is checked, songs will be automatically cross faded and overlapped based on the following:

- **Overlap tracks by** - The number of seconds to overlap songs by.
- **Fade tracks by** - the number of seconds to fade in and fade out songs.
- **Fade In** - The type of fade in to apply.
- **Fade Out** - The type of fade out to apply.

Beat Match Songs

If this option is checked, songs will be beatmatched and time stretched to the following settings:

- **Tempo** - The master tempo or BPM for the project or the select of songs. Songs will be time stretched so that they have the correct tempo.
- **Get Average** - A convenient function that sets the tempo to the average tempo of the selected songs or all songs. (Depending on whether "Selected Songs" is checked above.)
- **Trim songs by** - Automatically trims songs by X number of beats so that you can get to the important parts of the song. This helps to trim songs that have excessively long intros and endings without a strong beat.

Use Harmonic Mixing

If this option is checked, each song will be pitch adjusted to match the previous song using a special harmonic mixing system.

Actively Maintain Settings

If this option is checked, the software will attempt to keep the best beatmatched, cross faded, and harmonically mixed song list as possible. This will affect deleting, moving and adding new songs, as well as shuffling and sorting. **IMPORTANT:** If this option is off, any edits such as moving or deleting songs could cause the mix to be unbeatmatched or unharmonically mixed.

Beatmatched CDs - Crossfading Fun - Making A DJ Remix

New Project Dialog

Choose what type of project to create.

Beat Matched Song List

Choose this if you want to beat match songs automatically! Each song will be time stretched so that it seamlessly blends with the next song. ** Please note that you should choose songs that have a similar tempo. Trying to seamlessly blend a mellow song with a fast paced one will probably not sound that great, although it will work. Optionally choose to harmonically mix the songs which adjusts the pitch in order to minimize dissonant tones between the songs! Burn your beat matched song list to an audio CD or render it to an MP3 file. After choosing this, the DJ Fader dialog comes up.

Audio CD / Mix

Choose this option if you just want to make an audio CD or mix of songs. After choosing this, the DJ Fader dialog comes up. You can disable cross fading, if you want.

MP3 CD

Choose this to create an MP3 CD filled with mp3s or other compressed audio files. See more on MP3 CDs.

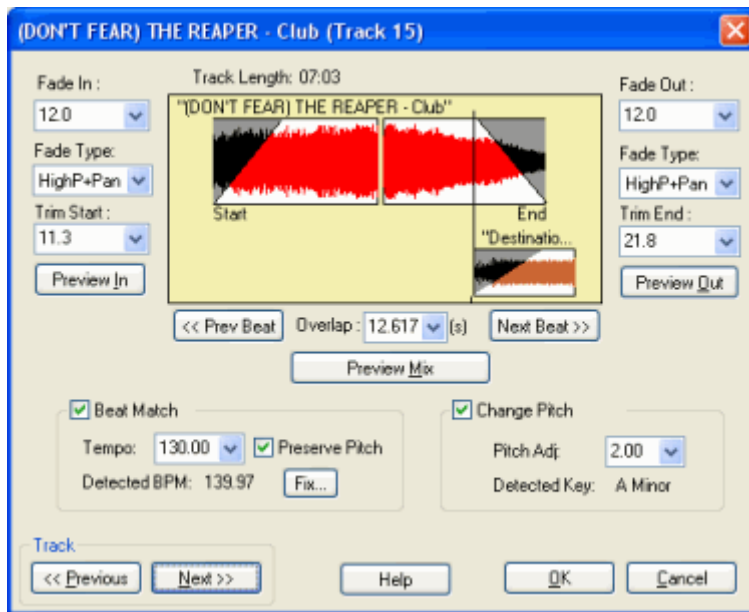
Load An Existing Project

Select a recent Song List project from the drop down list or click the "Browse" button to find one.

Trimming, Fading and Mixing Your Songs

One of the features that sets DJ Twist & Burn apart from the competition is the ability to edit the mix on a very detailed level.

Bring up this window by right clicking on a song and selecting "Overlaps, Trims & Fades", "Edit BPMs/Pitch Settings", or by clicking the button.



Trimming Your Songs

If you have an extra long applause or unnecessary silence, you can trim or edit it out by simply clicking and changing the "Trim Start" or "Trim End". To hear the trim, click either "Preview In" or "Preview Out". (Note that if you have the option to "Automatically Remove Silence" turned on, some songs may already be trimmed.)

Fading Your Songs

If you have an extra long applause or an incomplete song, you can make it sound very smooth by simply adding a fade. You can set the "Fade In" and "Fade Out". To hear the fades, click either "Preview In" or "Preview Out".

Choose a fade type for each transition. (It doesn't have to just be a traditional volume fade!)

Overlapping Your Songs

By changing the "Overlap" time, you can mix the current and subsequent song. Usually, this works well in combination with fading. To hear the overlapped area, click "Preview Mix". Note that it will start a few seconds earlier than the overlap area.

Beat Match

If this option is on, the software will time stretch the song to the desired tempo.

If the DJ Fader is set up to beat match, this will be automatically adjusted. Click "Fix..." to adjust the original tempo, if it was incorrectly detected. To adjust the overlap synced to the beat, click "Next Beat" or "Prev Beat". (These buttons will only be available if "Beat Match" is on.)

Change Pitch

This simply changes the pitch of the song in semi-tones.

Navigating Your Songs

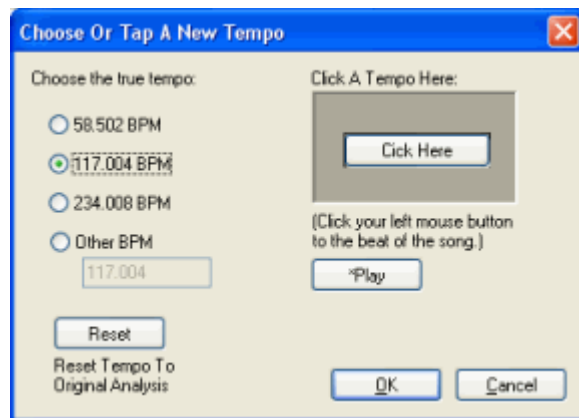
When you are adjusting the mix, it is very handy to go back and forth from track #1 to track #2, etc. Click the "Previous" and the "Next" buttons to navigate between tracks. (For example, when working on a fade between 2 tracks, you will also need to adjust the fade in of the second track.)

MP3 CD Note: When making an MP3 CD, if you want to hear trims, fades, time stretched or pitch shifted, you must make sure to choose "Specify Settings" and then click the option "Use trim, volume, EQ, Boost, fading & normalization settings". Also, be warned that this will cause the "Convert" stage to take a long time, as it will have to re-render into new MP3 files.

(Overlapping and mixing will not be preserved in MP3 CD mode!)

Tempo Fixer Window

If the software incorrectly detects the original tempo of a song, this allows you to fix it! Please note that this should only be used if DJ Twist & Burn incorrectly identified the original tempo. In other words, this should be used rarely.



Choose from the one of the suggested tempos or play the song and click the "Click Here" button in time with the beat and it will calculate a tempo.

Setting Volume, Boost & Effects

You can adjust the volume, boost and effects of a song. (These settings are applied when burning CDs!)

Bring up this window by right clicking on a song and selecting "Adjust Track Volume/Boost/Effects" or by clicking the button.

Volume

If a song isn't loud enough, adjust the volume to bring it up or down. Click "Reset" to return it back to 100%. The normal volume is 100%. If you have "Automatic Loudness Balancing" and the volume is not 100%, it means that the software analyzed the song and determined that it needed to be lowered in volume to sound the same as other songs. To turn off this feature, go to the Audio Preferences.

Boost

Boost will increase the "loudness" of a song by squashing the higher volume parts and bringing up the lower volume parts. Click "Use Boost" to turn on boost for the current song. (The effect approaches the sound of the booming voice of a radio DJ on the extreme side. For those that know more about audio technology, Boost is really dynamic compression.)

□ **Level**

The Boost Level specifies the threshold to start boosting songs. The higher it is, the more it will boost. Be careful, adjusting this setting, as you may introduce distortion, especially if you set it above 65%.

□ **Power**

This is the ratio that the song is boosted. For example, if a portion of a song is found to be below the "Level", it is then adjusted by the "Power" setting.

□ **Reset**

This returns the boost settings to the default settings. (Of course, turning off boost will make sure to not alter the original audio.)

Effects

You can add an effect to this song, including EQ, Delay, Reverb, Chorus, Flanger, Voice Removal and a host of third party VST and/or DirectX effects. Choose a meta preset or create your own. More on effects...

NOTE: We recommend that you use this sparingly. Don't try adjusting the song to your specific computer speakers. The speakers that you play your CD on may sound totally different!

MP3 CD Note: When making an MP3 CD, if you want to hear these changes, you must make sure to choose "Specify Settings" and then click the option "Use trim, volume, EQ, Boost, fading & normalization settings". Also, be warned that this will cause the "Convert" stage to take a long time, as it will have to re-render into new MP3 files.

MP3 CD Wizard

The features and benefits of a MP3 CD is that you can store potentially 200 songs on a single CD!!! If you happen to have a DVD burner, you could burn approximately 1000 songs on a single DVD. You would rarely get sick of you music and could potentially back up your entire music collection on one or two DVDs!

There are 3 presets for burning MP3 CDs:

Standard (the default)

- Choose this if you don't know what your MP3 CD player supports
- Supports MP3s from 32-320 kbps (VBR or CBR)
- Converts any WMA, OGG or WAV to MP3 (does not affect original files)
- Unlimited folders and sub folders
- No limit to the number of songs
- Converts songs that have detected errors, ie: bad frames.
- Preserves the order of the songs by modifying the song names to '0001-song1, 0002-song2', etc.

Fast (for the fastest burns)

- Supports any WMA, MP3, OGG or WAV
- Supports all bit-rates
- No song order preservation
- Does minimal processing to get the CD burned as fast as possible!

Specify (for greatest control)

- You can choose the number of folders & sub folders possible
- You can choose to preserve the order of your songs!
- You can choose to normalize and/or auto trim silence from songs
- You can choose the formats that your player supports, ie: if you only want to support WMA files, all MP3s being burned will first be converted to WMA and then burned
- More on this option : Specify

Specify MP3 File CD Settings

For the greatest control on format, bit-rate, folders and order preservation, choose this option in the MP3 File CD Wizard.

Page 1: Supported File Formats

Page 2: MP3 Settings (if applicable)

Page 3: WMA Settings (if applicable)

Page 4: Folder Settings

Page 5: Final (Order preservation, miscellaneous)

Page 1: Supported File Formats

Not all MP3 CD Players are created alike! ☺ Most can play MP3 files. Many cannot play WMA files. (WAV files will automatically be converted to either WMA or MP3, depending on your settings.) Select the formats that your player supports. If you aren't sure, consult your manual, or find product information on your player on the Internet via a search engine, such as Google.

If you have more than one format that your player supports, you will need to choose the format that you'd like all unsupported formats to convert to. For example, if your player supports MP3 and WMA, then you might choose WMA. If anything needs to convert, then it will convert to WMA. (You have the option of choosing the bit-rate on the following page.)

Page 2: MP3 Settings

Page 2 contains the MP3 settings. (This may be skipped if it was not checked on the previous page) You can set the minimum and maximum bit rate that your player supports. If an MP3 isn't in the supported bit rate range, it will be converted. You can set your player to support Variable Bit Rate (VBR). If you uncheck the option "My player supports VBR", then it will convert any MP3s that are VBR.

If you are converting to MP3, choose the bit-rate that you'd like to convert unsupported files to.

Note that if you do not select MP3 on page 1, you will not see this page.

Page 3: WMA Settings

Page 3 is similar to page 2, except that it contains the minimum and maximum bit-rate for WMA. Anything that is out of the range you select will be converted.

Note that if you do not select WMA on page 1, you will not see this page.

Page 4: Folder Settings

You have the option to set up how your MP3 CD player handles folders. Note that these settings will mainly warn you if you create a play list that your MP3 CD player does not handle properly.

My player supports folders - If your player supports a limited # of folders, click "Limit to" and enter in the maximum # of folders that your player allows

My player supports sub-folders under folders - If your player supports a limited # levels of sub-folders, click "Limit to" and enter in the maximum # of levels that your player allows.

My player also limits the number of songs to - (more options)

- # songs total - this is the maximum number of songs total on the entire CD, regardless of folders

- # songs per folder - this is the maximum number of songs per folder allowed.

Maximum File Name Length - This lets you set the maximum file name length. (Some MP3 CD players have limits on the file name length.)

Page 5: Final (Order preservation, miscellaneous)

File order preservation can be very important, especially for stories or 'audio books'. Who likes to listen to chapter 15 before chapter 2? (Okay, okay, for those few who do, put your hands down. ;-)) Some MP3 CD players will put your songs in either alphabetical or date order, which would be wrong if the order is important.

Preserve Song Order

- *Rename the song files so that they sort correctly* - This option will actually rename the song files by pre-pending a track # to the name of the file. For example, "chapter1.mp3" would turn into "01_chapter1.mp3".

- *My player supports M3U play lists* - Use this option if your player supports M3U play lists. (You'll need to load the M3U play list in your MP3 CD player.) The play list will be called "_playlist.m3u" in the main/root directory of the CD.

My player supports spaces in folders and song names - Some players do not support spaces in folder and song names. If you uncheck this option, it will replace spaces with underscores _ . For example, a file name "Cool Hand Luke.mp3" would turn into "Cool_Hand_Luke.mp3"

Use trim, volume, EQ, Boost, fading, and normalization settings - If this is checked, songs will be trimmed, EQ'd, boosted, faded and normalized and converted into temporary files before burning. It will use the settings found on the CD Burning page in the Preferences.

(Note that this will add a lot of time to burning the CD, which is why this is off by default. Also, overlapping and mixing is not preserved in MP3 CD mode.)

MP3 CDs Preferences

This preference page allows you to quickly set up rules that specify how your MP3 CDs will be created. You might choose to run the wizard instead.

You can set the following MP3 CD burn modes:

STANDARD

This will attempt to burn the most compatible MP3 CD.

Play List order is preserved! Songs will be renamed to "01-My Song", "02-Blues Traveler", "03-Rocking Out", etc. (This ensures that the alphabetical order will be the same as the Play List order.)

Converts WAVs, OGGs and WMAs into MP3. (Most MP3 CD players support MP3, and some support the other formats. In this way, the potentially unsupported files are converted to the most common format.)

Trimming, Fading, EQ, Normalization, Volume and Boost settings are IGNORED.

FAST (Default)

This is the fastest option. Songs get burned "as is".

Play List order is not preserved. Songs will play alphabetically on MP3 CD players.

Trimming, Fading, EQ, Normalization, Volume and Boost settings are IGNORED.

Fastest option

SPECIFY

This option allows you to specify the exact settings for your MP3 CDs.

Supported formats. MP3? WMA? If your MP3 CD player supports MP3, click the box next to MP3. Click the "Settings" next to the checkbox to set the minimum and maximum bit-rate and whether or not it supports VBR, etc.

Convert unsupported formats to? Set this option to the destination format for any files that need to be converted. ** Note that you can specify the destination format bit rate by clicking the "Settings" button next to the format you've chosen. (Note that OGG and WAV are not destination formats, by design.)

My player supports folders. Click this if your player supports folders and then click "Settings" to specify further options, including how to handle sub-folders and the maximum # of songs and folders, possible.

Play order preservation. More on this ...

Maximum file name length. (Some MP3 CD Players may not support the full 63 characters for each file name.)

Preferences

The preferences are settings that aren't changed that often.

To access the Preferences, click "Preferences" from the "File" menu. There are 6 different sections. Just click on the section you'd like as seen above. After clicking the section, the right hand portion of the screen will show the details.

General

Audio Processing

Clipboard

CD/DVD Burner

MP3 CDs

Ripping Tracks

Sound Scan

Remote Database

General Preferences

Use small toolbar

Check this to save vertical screen real estate on the toolbar. (It shrinks the toolbar.)

Create log file

A log file will be created during operation of the software so that errors or program defects can be tracked. If you feel you have found a bug or are having technical problems, please send us your 'cdburner-log.txt' file located in your DJ Twist & Burn directory.

Use Acoustica's ASPI driver

If this option is checked, the software will attempt to use special ASPI drivers supplied by Acoustica's web page. The ASPI layer is how the software communicates with the CD drives. (Note that these special ASPI drivers are not part of the default download.) See <http://www.acoustica.com/dj-twist-burn/support.htm> for more info.

Show Song List Columns

Choose which columns to show in the Song List window.

- Title
- Length (In Time)
- Tempo (BPM)
- Orig BPM (Original Tempo)
- Key
- Orig Key (Original Key)
- Pitch Adj. (Pitch Adjustment in half steps)
- Time Stretch (% of original)
- Effects (Any Meta Preset in use)
- Album
- Artist
- Genre
- Status
- Type (MP3, OGG, etc.)
- Format (Bit rate, channels, etc.)
- Size (Megabytes)
- Track # (Original Track Number)
- Location (File location)

Advanced Goldenhawk Drive Override...

If the software does not detect your CD or DVD recorder automatically and/or is defaulting to use WinXP IMAPI mode, you can try using a generic driver. Click "Goldenhawk Drive Override..." and select the CD recorder in question and then select "Use A Generic CD Writer Driver". Click OK and restart the software. If the software crashes, you will need to delete a file called "DEVICES.DEF" from your DJ Twist & Burn folder. Find out more about this on our online help @ <http://www.acoustica.com/dj-twist-burn/support.htm>

Audio Processing Preferences

Automatically Boost Songs That Need It
Automatically Check For Incomplete Songs
Automatic Loudness Balancing
Normalize Track Volumes
Automatically Remove Silence
Advanced

Automatically Boost Songs That Need It

When you add a song to the Song List, the software will parse it and analyze it to see if it needs a boost. Basically, if the song's relative 'loudness' is too low, it will apply some boost automatically. This saves you from potentially embarrassing and frustrating experiences of burning a song and having to constantly adjust the volume dial!

Boost Setting

Choose from Light, Medium and Strong. Light boost may not be overtly audible, whereas Strong boost might cause a mild amount of distortion.

Warn Me When A Song Is Automatically Boosted

When the software is done parsing a song, this will pop up a dialog to warn you that it has been boosted. The song will also show the boost symbol next to it:

Automatically Check For Incomplete Songs

The software will scan the song to determine if it is incomplete or cut-off too early. This can happen due to partial downloads, partial rips, etc. When a song is determined to be incomplete, you will see the symbol next to it.

The algorithm works by testing the volume level for the last 20 milliseconds of the song. If it is beyond a threshold value, it will notify you that it may be a possible incomplete song. The threshold value can be set from 0% (absolute silence) to 100% (half maximum volume) The default setting is 12%

For those downloading their music, this is a useful option to help avoid burning partial songs!

Warn About Incomplete Songs

When the software is done parsing a song and it is incomplete, the software will pop up a dialog to warn you that it might be incomplete. You will have the option of playing the very end of the sound.

Fade Out Incomplete Songs

If a song is determined to be incomplete, it will automatically fade it out so that it sounds less abrupt. (A very nice feature for songs that are 90% there, etc.) You can specify how long the fade should be.

Automatic Loudness Balancing

When a song is analyzed, DJ Twist & Burn will automatically set the volume to a consistent

and balanced volume so that all songs have the same loudness. This helps to avoid the common problem of reaching for the volume control whenever a new song comes on. This algorithm analyzes each song and then reduces the volume. Your CDs will be slightly quieter, but you will not have to adjust the volume on your stereo all the time! (Note that this algorithm is based on [Replay Gain](#) and will cause your computer to take longer to process each song.)

Normalize Track Volumes

What is normalization? It is a technique to take a low-volume recording and boost its volume so that it matches other volumes.

DJ Twist & Burn will normalize a track if its volume is different by the specified percentage. Enter a percentage cut-off level that will cause sounds to be normalized.

You can also choose what source DJ Twist & Burn will use to measure the volume level. It can measure against the loudest track or the loudest volume possible.

Low volume songs are 'normalized' to sound consistent with other tracks.

Automatically Remove Silence

What is auto-trim silence? It is a technique to remove silence at the beginning and end of a song. If you want to make sure that you don't have silence between tracks, set this to a low number.

If the silence is not automatically trimmed, you can always select the sound and then click "Overlaps, Trims & Fades" to adjust the trim.

Advanced

Effects - You can choose to turn DirectX and VST effects on or off here. If you have 3rd party effects that you'd like to use in DJ Twist & Burn, you'll need to check these options on. Also, you can adjust the VST folders to search for effects by clicking "Edit VST Folders..."

Buffers - Set the # of playback buffers and buffer size. If you are experience gaps are static when using the software to listen to songs, try increasing the buffer size. If you'd like the wave form display to be more responsive when playing back sounds, lower the buffer size.

Clipboard Preferences

These options control the text that is copied into the clipboard when you copy a track in the Song List.

Copy track # - the track's number or order on the CD is copied into the clipboard

Copy track length - the track's length in time is copied into the clipboard

Copy track title - the track's title is copied into the clipboard. Also see renaming tracks.

Copy artist - the track's artist field is copied into the clipboard

How to copy track information

Acoustica CD/DVD Label Maker

If you're looking for an industrial strength CD/DVD label maker that makes CD labeling fun & easy, try out Acoustica CD/DVD Label Maker. It integrates seamlessly with DJ Twist & Burn and includes over 1000 custom art CD & DVD labels! [Try out Acoustica CD/DVD Label Maker!](#)

CD/DVD Burner Preferences

Click on a topic for more help.

CD Writer Device Eject disc when recording is done

Play sound when finished CD-Text

Burn-Proof Use IMAPI

Advanced

Auto insert notification Disconnect

Sync Data Transfer

A8M63N">CD Writer Device

If you have more than one CD recorder, this control allows you to select between them. It also shows the recorder name, model and firmware version.

Eject disc when recording is done.

This option instructs the CD recorder hardware to eject the disc when recording is finished. Due to varying support, this may not work on all CD recorders.

KUNS2X">Play sound when CD is finished.

Check this if you want to hear a sound play when a burn succeeds or fails. The sounds are stored in the DJ Twist & Burn directory. You can replace these sounds with your own sounds. The success sound is called "success.wav" and the burn fail sound is called "failure.wav"

Use CD-Text (If supported)

Some CD players will show track and title information during playback. Note that not all CD/DVD recorders support CD-Text. Look for the CD-TEXT logo on your CD player to see if its supports CD-Text. (Usually, the Sony brand CD players show CD-text. This will be enabled if the current CD Writer device supports CD-Text technology)

Use Burn-Proof (If supported)

Burn proof technology ensures successful burns. It is highly recommended to leave this option checked! (Incidentally, I'm not sure why you would turn off Burn-Proof, except for troubleshooting perhaps.) Burn-Proof is also known as Just-Link. (This will be enabled if the current CD Writer Device supports Burn-Proof technology)

Use IMAPI

IMAPI is the built in Windows XP burning support. If you are having burn failures or are not seeing one of your burners, click this option. Note that it only works on Windows XP! This table shows the capabilities of IMAPI compared to the other burning engines.

Feature Goldenhawk IMAPI

Converting to WAV stage Optional Mandatory

Burning mode DAO TAO (2 second track gaps)

Fading between tracks Supported *Supported, but must burn as one track.

* Due to IMAPI being limited to Track At Once (TAO) and a mandatory 2 second gap, we have added an option to burn a faded and overlapped session as one track. The draw back is that you cannot seek between tracks easily and must use the seek and rewind features to get to a specific part in the CD.

ADVANCED

Auto insert notification

This reflects your CD-recorders auto insert notification setting. Auto insert notification is how your computer automatically starts playing audio CDs you put in the drive. Unfortunately, this is also what causes burn failures, especially during the first 5% of the burn.

Disabling or enabling auto insert notification will require a reboot to take affect.

** Packet writing programs such as DirectCD by Adaptec require that auto insert notification is on.

Disconnect

Disconnect should be turned off for SCSI CD-recorders, as they run more efficiently this way.

Disabling or enabling auto Disconnect will require a reboot to take affect.

*** This feature is disabled for Windows 2000 and must be enabled/disabled manually.

Sync Data Transfer

Sync Data Transfer should be turned off for SCSI CD-recorders, as they run more efficiently this way.

Disabling or enabling auto Sync Data Transfer will require a reboot to take affect.

*** This feature is disabled for Windows 2000 and must be enabled/disabled manually.

Ripping Tracks Preferences

Rip your CDs to MP3, WMA, OGG or WAV files.

Rip songs to folder

Store songs in folder with artist's name

Use artist in song's file name

Use album in song's file name

Use track number in song's file name

Play sound when done ripping

Rip Speed

Jitter Correction

Error Handling During Rips

Rip files to (format)

Rip songs to folder

You can specify the folder where you want your freshly ripped songs to go. Depending on the

other options you have selected, the software may create sub-folders by the artist's name. To change the folder, click "Change" and select a new folder. (Note: you may want to change your 'rip folder' to be on your largest hard drive.)

Store songs in folder with artist's name

DJ Twist & Burn will create a sub folder with artist's name and put all ripped tracks within this folder. The default location is "My Music" under your My Documents folder.

Use artist in song's file name

This option will cause the software to create the ripped file to be called something like "**Bubba Smith - My Silly Dog.mp3**". The artist is "Bubba Smith" and the track is "My Silly Dog"

Use album in song's file name

This option will cause the software to create the ripped file to be called something like "Bubba Smith - **Whole Lot Of Fish - My Silly Dog.mp3**" or "**Whole Lot Of Fish - My Silly Dog.mp3**" depending on your other options. The artist is "Bubba Smith", the album is "Whole Lot Of Fish" and the track is "My Silly Dog"

Use track number in song's file name

This option will cause the software to create the ripped file to be called something like "Bubba Smith - Whole Lot Of Fish - **1. My Silly Dog.mp3**". The artist is "Bubba Smith", the album is "Whole Lot Of Fish" and the track is "My Silly Dog"

Play sound when done ripping

When the rip finishes, this option will play a sound. This is helpful if you are out of the room and want to know when the rip is done! There really isn't much more to say about this one. ☺

Rip Speed

This allows you to set the speed of the rip. The default is "Max" which is the maximum speed possible for your CD drive. You may choose a slower speed for more accurate rips.

Jitter Correction

Drinking too much coffee? This feature will help you calm down! ☺ Seriously, some CD drives cannot seek or move to an exact time offset on the CD and, thus, it is possible to have errors when copying a track. By default, DJ Twist & Burn automatically detects whether or not it needs jitter correction.

If needed - This is the default.

No - Do not use jitter correction. (Faster, possible inaccurate rips.)

Yes - Use jitter correction. (Slower, more accurate rips.)

Error Handling During Rips

It is possible to have a rip error if a track especially if the CD is dirty or scratched. By default, DJ Twist & Burn will attempt to re-read the erroneous track info 10 times. The other options are:

Ignore Them - Ignore errors and rip as if nothing happened. ☺

Retry - This will retry reading the erroneous area for the given # of times.

Abort - This option will halt the rip if an error occurs.

Rip files to (format)

This allows you to set the file format in which your freshly ripped files are created.

Temporary Wave files - This option is for those that simply want to copy tracks for burning CDs. These files will not be added to your Music Library. (The temporary WAV files are stored in your temp folder and will have the .tmp extension.)

Store in format- This option is the default and will cause the ripped songs to be added to your Music Library. In addition, you can choose the file format to rip to.

- *MP3* - The default format. (MP3s are compressed to about 10 times smaller than WAV files for a similar quality)
- *WAV* - Uncompressed audio format. (Ripping will be much faster because there is no compression necessary. However, the file size will be around 40MB per song!)
- *WMA* - This is Microsoft's format and is generally smaller than MP3s, although not as supported. Microsoft claims it is ½ the size of an equivalent MP3.
- *OGG* - A royalty and patent free format. Sound quality is great even at low bit rates! (Encoding to OGG is slow, but the quality is great!)
- *Settings* - This will allow you to adjust more settings for the format you are ripping to, including the tag type.

Sound Scan Preferences

DJ Twist & Burn will constantly be adding new songs into your Music Library found on your computer's hard drive. These options allow you to set the parameters of what gets 'imported' into your library. (Note that there is a big difference in the way 3.0 and 4.0 worked.)

Types of Songs

Click the type and minimum length of the files that you'd like to add. For now, you can choose to import MP3, WAV, OGG & WMA files. (Note that it only supports non-DRM protected WMA files.)

Where should the scan for new songs?

This allows you to specify the folders to scan for new songs that you may have downloaded, created or ripped. (Songs ripped with DJ Twist & Burn are automatically added to the library)

Search entire computer

DJ Twist & Burn will search the rest of your computer for music files. This includes all hard drives and any networked drives, as well. In this mode, it searches your entire computer. You can specify directories to not search in this mode.

- **Search network drives**

DJ Twist & Burn will search any networked drives. You may want to turn this off if you find that your imports are taking longer and you don't really care about searching networked drives.

- **Search on my desktop**

Your desktop and sub folders on the desktop will be searched for new music files.

- **View Exclude List**

This brings a list of directories that you do not want to search for new songs. Examples would include temporary directories, game folders. If you want to speed up your search add as many directories as you can think of, especially larger directories. (Note that if you had a root

directory such as "C", this will not search C or any folders under C which might not be the intended result!)

Search these folders ONLY

This allows you to add directories to search. The sound scan will search these directories and all subdirectories under them. For example, if all of your music was in "C:\My Music" in sub-directories such as "C:\My Music\Artist1" and "C:\My Music\Artist2\", etc., you'd add this "C:\My Music\". The sound scan would search this folder and all sub-directories. The order is important and it will start searching in the top directory and finish with the last.

- o **Suggest Folders...**

These will scan your computer for folders that contain the word "mp3", "music" and add them automatically to the directory list. (This can be very useful and it's quick.)

- o **Up, Down, Remove, Add**

These buttons allow you to re-arrange the list of folders.

Remote Database Preferences

The remote database is freedb.org . It is a FREE online database of 1000's and 1000's of CD albums and track information. When you put a CD in your CD drive, our software queries the database in order to get the artist, album and track information.

MANY, MANY thanks to the people and volunteers behind freedb.org!

Automatically get album information

This option will cause DJ Twist & Burn to query freedb.org as soon as a new CD is put in a CD drive. It will cause your computer to dial or connect to the Internet. If you do want it to look up the information automatically, uncheck this option.

Update site list

There are many mirrors of the freedb.org database hosted around the world. It is possible that freedb.org is too far from your location and does not always establish a connection. Click this button to retrieve a full list of official [freedb](http://freedb.org) sites hosted around the world.

Use this freedb site

Select the site from which you'd like to retrieve album, artist and track information for your CDs. If you only see one site, click the "Update site list". You will see a short description and location of the site when you click on the site.

Buy / Registration

DJ Twist & Burn has a trial period of 7 days without any restrictions! After that, you will need to purchase a registration code to burn a CD or render to an audio file.

Please don't let the above happen to our programmers! All joking aside, we have put many hours into this software and we hope that you decide to purchase the software!

Benefits of Registration

Unlimited and unrestricted usage!

Support Acoustica and future products of the same caliber.

Get unlimited usage NOW! You can purchase a registration code right now and automatically receive a registration code in your email within minutes.

BUY NOW! To purchase a registration code, click the "Buy Now On-line" item from the "Help" menu or the "BUY" button on the toolbar.

If you don't have the software up now, visit the website to purchase a code. Go to www.acoustica.com/dj-twist-burn/buy.asp!

Purchase methods

Credit card

Pay Pal

Postal/Traditional Mail

Get Your Code Now!

Menu Help

File Edit Find Library CD Song List Player Help

File Menu

New Song List

Creates a new song list with a new title.

Short Cut: *Ctrl + N*

Open Song List...

Opens an existing song list made previously with DJ Twist & Burn

Short Cut: *Ctrl + O*

Save Song List

Saves the current Song List. If nothing was saved before, it will prompt you for a file name.

Short Cut: *Ctrl + S*

Render To File..

Renders or mixes your song list into one or more audio files. More...

Save Song List As...

Saves the song list in a specified location.

Preferences...

Opens the Preference window.

Recent DJ Twist & Burn Sessions

This is not an actual menu item. However, the 8 most recently used DJ Twist & Burn session will appear under the File menu. Just click one of this previous DJ Twist & Burn sessions and it will load into the session.

Exit

This quits the program.

Edit Menu

Undo

Use this if you made a mistake or want to go back to a previous state. Undoable actions include adding tracks, deleting tracks, moving tracks, sorting tracks, shuffling tracks, renaming tracks, and re-setting a track's volume. More.

Short Cut: *Ctrl + Z*

Redo

Use this if you want to go back to a state before an undo. Undoable actions include adding tracks, deleting tracks, moving tracks, sorting tracks, shuffling tracks, renaming tracks, and re-setting a track's volume. More ...

Short Cut: *Ctrl + Y*

Cut

This will remove the selected track or tracks from the Arrange window. The track or tracks will also be placed on the clipboard for pasting if desired. Relevant textual track information is also copied to the clipboard.

Short Cut: *Ctrl + X*

Copy

This will copy the selected track or tracks from the Arrange window. The track or tracks will also be placed on the clipboard for pasting. Relevant textual track information is also copied to the clipboard.

Short Cut: *Ctrl + C*

Paste

This will paste any tracks in the clipboard into the Arrange window.

Short Cut: *Ctrl + V*

Delete

This will remove any selected tracks from the Arrange window

Short Cut: *Delete key*

Select All

This will select all tracks in the Arrange window

Short Cut: *Ctrl + A*

Copy Track Information To Clipboard

This will copy all textual track information to the clipboard. This can be pasted into other programs such as a CD labeling software package.

Show Toolbar

This lets you toggle the toolbar from being visible to not being visible, and vice versa.

Find Menu

Show/Hide Find Tab

This lets you toggle the ~~Find Songs tab~~ from being visible to not being visible, and vice versa.

Start Search

This will begin a search. It will search on the text in the "Search for" field on the Find Songs tab.

Add All Found Songs To Song List

Adds all found songs currently in the ~~Find tab~~ to the Song List window.

Short Cut: *Ctrl + I*

Library Menu

Show/Hide Library Tab

This lets you toggle the Library tab from being visible to not being visible, and vice versa.

Play/Stop

This will start playback of the currently selected song.

Delete

This will move the selected song, album or artist to the DJ Twist & Burn Trash.

Undelete All

This will 'undelete' any items in the trash and move them back to their previous albums and artists.

Select/Deselect

This will add or remove the current song, album or artist and any sub items to the Song List.

Edit Tag Information

This will edit the tag information for the currently selected song, artist or album.

Open Containing Folder

This will open the folder in Windows containing the file for the most recently selected track. More ...

Empty Trash

This will move any artists, albums and songs into the Window's Recycle Bin. *****Use caution with this option as some items might be important to other programs or games.*****

Clean Library

This will remove any songs that have been moved or deleted from your hard drive. This may take a few seconds depending on the size of your library.

Delete Library

This will delete your music library. Note that this will not delete your actual music files!

CD Menu

Show CD Drive

This lets you toggle the CD Drive tab(s) being visible to not being visible, and vice versa. A sub menu will pop up with a list of your CD drives so that you can select the desired CD Drive. See CD ripping for more ...

Play/Stop Track

This will play the currently selected CD track. Note that if you don't hear the music, you may need to adjust your Window's mixer settings.

Rip Tracks

This will start ripping the currently selected tracks from the current CD Drive.

Short Cut: *Ctrl + R*

Select/Deselect This Track

This will select or deselect the current track. (A selected track will have a check in it's checkbox and will be ripped when "Rip Tracks" is pressed.)

Deselect All Tracks / Select All Tracks To Be Ripped

This will select or deselect all tracks. (A selected track will have a check in it's checkbox and will be ripped when "Rip Tracks" is pressed.)

Edit Tag Information

This will edit the CD tag information for the currently selected track. See more on this ...

Mark All as Uncopied

This will allow you to re-rip any tracks that you've already ripped. This is useful if you've ripped the songs in the wrong format, etc.

Look Up Album Info

This will look up the song track information for the currently selected CD drive.

Erase CDRW...

If a CDRW is in the CD/DVD writer, this will do a quick erase on the CDRW . (This may take up 2 minutes)

Song List Menu

DJ Fader Settings...

This brings up the DJ Fader dialog.

Shuffle

This will re-arrange your tracks in a random order.

Add Songs...

This lets you import specific files from specific folders. More ...

Short Cut: *Ctrl + T*

Remove All Songs

This will remove all songs from the "Song List" window.

One Click EZ Beat Matcher!

This will automatically sort and beat match your song list. More...

Short Cut: *Ctrl + E*

Beat Match Songs

This will beat match any selected songs. (It brings up the DJ Fader dialog with apply to selection on.)

Edit BPM/Pitch Settings...

This lets you fine tune the tempo, pitch, trim, overlaps, and cross fades of a song. More...

Fix Original Tempo

This will bring up the detected tempo fixer window for the selected song.

Adjust Track Volume/Boost/Effects

This will bring up a window allowing you to change the volume, boost and effects on the selected track. More ...

Overlap, Trims & Fades

This will bring a window allowing you to adjust the trims, fades and mixing for the most recently selected track. More ...

Balance Loudness Equally Over All Songs

This option will set the volume of all songs in the song list to an optimum and balanced listening volume. It will help each song sound around the same loudness so that you can avoid reaching for the volume knob at each new song! See more on Loudness Balancing...

Effects

This brings up a sub menu that allows you to apply or remove Meta Effects on the selected song(s). More..

Edit Tag Information

This will bring up the Edit Tag window on the currently selected song in the Song List

Open Containing Folder

This will open the folder in Windows containing the file for the most recently selected track. More ...

Audio CD Mode

This option will be checked if the Song List is currently in Audio CD mode. (MP3 CD Mode will be checked when this unchecked) More ...

MP3 CD Mode

This option will be checked if the Song List is currently in MP3 CD mode. (Audio CD Mode will be checked when this unchecked)

Launch MP3 CD Wizard

This brings up the MP3 CD Wizard. More ...

Transfer Songs

This brings up the Transfer Songs dialog.

Burn CD!

This will bring up the "Burn Audio CD!" window, a click away from burning your CD.

Short Cut: Ctrl + B

Player Menu

Play / Stop

This will start playback from the previously stopped song or from the last song selected in the Arrange window. If the last song selected was in the Find window, it will start playback from the Find window. Of course, if a song is currently playing, it will stop playback.

Previous Song

This will play the previously played song. (This will not work if in "Random Playback" mode though)

Next Song

This will play the next song. (If in "Random Playback" mode, this could be any song on the list.)

Random Playback

If this is checked it will cause DJ Twist & Burn to playback songs in a random order. Otherwise, the next song played will be the next one down the list.

Continuous Playback

If this is checked, when the currently playing song is finished, DJ Twist & Burn will start playing the next song. If this is not checked, playback will stop when the current song finishes.

Adjust Master Volumes...

This brings up the Window's sound card mixer control, which allows you to adjust your Wave, MIDI, CD, auxiliary and master volumes for your sound cards. You should adjust this first and then raise or lower the volume of your speakers for best results.

Help Menu

Help With This Software

This is where you are now. I hope you are enjoying the software!

Go To ACOUSTICA.COM

This will launch your default web browser with the website acoustica.com. You should connect to the Internet in your usual fashion if your browser does not connect you automatically.

Buy Now On-Line

This brings up the screen where you can purchase a registration code to unlock the software for unlimited usage. Depending on the method you register, a registration code will be delivered at any time of the day or night in a matter of minutes! More ...

Enter Registration Code

This brings up the screen where you can enter your purchased registration code into the software.

Check For New Version...

This option will contact our website to see if there is a new version of DJ Twist & Burn available.

Acoustica Software Products

This option will bring up a sub menu with some of our other products.

About DJ Twist & Burn...

This brings up a window with copyrights, credits and contact information for DJ Twist & Burn.

Toolbar

Help



New Creates a fresh, new session. Any songs in the Song List window are removed.

Open Brings up a window allowing you to open a previous burn session (.dtb file)

Save Saves the current burn session. If you haven't saved it yet, DJ Twist & Burn will ask you for a name and location to store it to.

Burn CD Will bring up the "Burn Audio CD!" window.

CD Label Will launch Acoustica CD Label Maker, if it is installed. To install Acoustica CD Label Maker, visit <http://www.acoustica.com>

Find Will toggle showing the Find window on and off.

Library Will toggle showing the Music Library window on and off.

Rip CD Will toggle showing the CD ripping windows on and off.

Add Let's you add songs from a folder

DJ-Fader Brings up DJ Fader dialog

Supported CD Recorders

DJ Twist & Burn supports many CD & DVD recorders. If your recorder is a new model and is not automatically supported, we may have released an updated version that supports your recorder. To check for a new version select "Check For New Version" from the "Help" menu in DJ Twist & Burn. (The best way to tell if your CD recorder is supported is to just run our DJ Twist & Burn on the machine.)

The latest list of supported recorders can be found at <http://www.acoustica.com/dj-twist-burn/support/supportedcds.htm>

CD Text Supported Recorders

CD-Text supported recorders (Assuming you are using the Goldenhawk CD burning engine. See above)
Make sure that "Use IMAPI" is not checked.

Hewlett Packard 7500 / 8100 / 8200 / M820e / 9100 / 9200

Plextor 4220T (requires firmware 1.02 or higher)

Plextor 8220T

Ricoh 7040 (requires firmware 1.20 or higher)

Ricoh 7060 / 7080 / 8040 / 9060

Sony CRX100E / CRX110E / CRX120E / CRX140E / CRX140S

Teac CD-R56S / CD-R58S (requires firmware 1.0J or higher)

Note that other recorders may support CD-Text although not mentioned in this help document.

How to uninstall DJ Twist & Burn

To uninstall DJ Twist & Burn, make sure to exit DJ Twist & Burn if you are in it.

Click the Window's "Start" button, followed by "Programs", followed by "DJ Twist & Burn", followed by "Uninstall".

Follow the instructions and the software will be removed from your system.

System Requirements

Operating System : Win95/Win98/WinNT/WinME/Win2K/WinXP
Recommended processor : Pentium 700 Mhz or better**
RAM : 256 MB
Sound card : required
CD Recorder : recommended. (USB/SCSI/IDE). See list.
Hard-disks : If converting to WAV first, it requires up to 700 MB free

** AMD based systems are also supported. Slower systems will find that it works fine

Support

For the most recent support information, please see the website.
<http://www.acoustica.com/dj-twist-burn/support.htm>

Always make sure you have the latest version of the software:
<http://www.acoustica.com/dj-twist-burn/download.htm>

If the software is having a reproducible crash, please locate the "cdburner-crash.txt" file that should be in your DJ Twist And Burn folder under Program Files. Contact our support and send this file which may help us figure out the problem.

If you aren't sure about how to use the software, check out one of the following resources on our web site:

- FAQ (Frequently Asked Questions)
- BBS (Discussion Groups)
- Personal Customer Support

<http://www.acoustica.com/dj-twist-burn/support.htm>

Acoustica, Inc

Address: Acoustica
P.O. Box 728
Oakhurst, CA 93644
USA

Website: www.acoustica.com

Info: Acoustica was founded in 1998 and is located in the foothills of the Yosemite Valley. Acoustica's mission is to create high quality, intuitive and powerful software. We value diligence, creativity and innovation. We are embracing Internet technology and the new world that it is creating! We also have this curious idea that SOFTWARE SHOULD BE EASY TO USE!

Fade Types

DJ Twist & Burn has very unique fade types between songs. Instead of just fading by volume, you can also fade by low pass filter, high pass filter, resonant filters, panning and various combinations.

- **Random** - A random fade type is chosen when new project settings are applied.
- **Volume** - A linear volume fade
- **Vol + Pan** - Volume fade + beat synchronized panning
- **LowP** - Low pass filter fade. (Fades from bass/low to treble/highs.)
- **LowP + Pan** - Low pass filter fade + beat synchronized panning.
- **HighP** - High pass filter fade. (Fades from treble/highs to bass/low.)
- **HighP + Pan** - High pass filter fade + beat synchronized panning.
- **RezLow** - Low pass resonant filter fade (Fades from bass/low to treble/highs)
- **RezL + Pan** - Low pass resonant filter fade + beat synchronized panning.
- **RezHigh** - High pass resonant filter fade. (Fades from treble/highs to bass/low.)
- **RezH + Pan** - High pass resonant filter fade + beat synchronized panning.
- **Volume2** - Exponential volume fade
- **LowP2** - Exponential low pass filter fade (Fades from bass/low to treble/highs.)
- **HighP2** - Exponential high pass filter fade (Fades from treble/highs to bass/low.)
- **RezL2** - Exponential low pass resonant filter fade (Fades from bass/low to treble/highs.)
- **RezH2** - Exponential high pass resonant filter fade (Fades from treble/highs to bass/low.)

What's New?

This section contains the new changes, additions, and fixes from previous versions.

Version 1.0

Initial Release!

Troubleshooting

Audio Problems
CD Burning Problems
Ripping Problems
Playback Problems
General Questions
Supported CD Recorders
CD-Text CD Recorders
How to uninstall DJ Twist & Burn

Still having problems? Visit our website!

<http://www.acoustica.com/dj-twist-burn/support.htm>

General Questions

How many songs can be burned on a CD?

Once I burn a CD, can I burn more songs on it later?

In the Find interface, can I search for a directory or a special programs MP3 files?

What type of blank media should I burn or record to?

How many songs can be burned on a CD?

You can have a maximum of 100 songs on a CD. However, most people will be able to add about 13 - 20 songs per CD. The main limit is that a CD can only hold 74 or 80 minutes of audio. (Time limit depends on the actual physical CD-R disc. Some support 74 minutes and some support 80 minutes. Burning an 80-minute CD-R requires that your CD-Recorder hardware supports it.)

Once I burn a CD can I burn more songs on it later?

No. DJ Twist & Burn burns in Disc-At-Once mode and always closes the session at the end of burning the disc. You should have all your songs arranged before burning.

In the Find interface, can I search for a directory or a special programs MP3 files?

If your songs are stored in a folder called "My Music" and you just want to find all of those songs. Just enter "my music" into the "Search For" field and then press the "Search" button.

If you are looking for songs created by a special program and they are stored in a special directory such as "Audiocatalyst", you can search on 'audiocatalyst'.

What type of blank media should I burn or record to?

If you want it to be usable on any standard home or car stereo, you should use a blank CD-R

disc. (You can use CD-RW, but they are only supported on some of the more modern audio CD players.)

Playback Problems

The CD has recorded successfully, but won't play in my home or car stereo CD player!
I can't hear any audio when I try to play songs within DJ Twist & Burn!
My MP3 CD is playing tracks back in the wrong order!

The CD recorded successfully, but it won't play in my home or car stereo CD player!

Did you make sure to use a **CD-R** disc? Many people mistakenly use a CD-RW. Some newer audio CD players will support CD-RWs, but when in doubt **use a CD-R!**

If you burned a MP3 CD, you will not be able to play it in an older CD player. The CD player needs to have the MP3 logo or it must be capable of playing MP3 or WMA files!

I can't hear any audio when I try to play songs within DJ Twist & Burn!

You need to check the following settings.

Make sure your speakers are plugged in, turned on and connected to your computer! (This happens to the best of us. ☺)

Check your Window's volume mixer and make sure that the Wave volume and Master volume are up and not muted.

Make sure you have the updated and latest sound drivers which you can get and install from your sound card's manufacturers website. After installing the new sound card drivers, you may need to re-boot.


My MP3 CD is playing tracks back in the wrong order!



MP3 CDs can fit many MP3s and WMA files on to a single CD or DVD. However, MP3 CD players play the songs in alphabetical order! If these tracks are chapters in an audio book, it will play in the wrong order! Make sure to go into the MP3 CD wizard and select "Specify". On page 5, you'll need to set it to preserve the file order. You'll need to burn a new CD after these settings have been applied.

Audio Problems

Some songs sound too fast or too slow!

The song has been time stretched too much. If the song has been time stretched, it will have on of the following symbols next to it.

 This track has been time stretched

-  This track has been time stretched from 10% to 20%
-  This track has been time stretched more than 20% (It may sound wrong.)

To turn off beatmatching, click on the "DJ Fader" icon and uncheck beatmatching in the DJ Fader dialog. Alternatively, you can turn off beat matching for each song, by selecting the song and choosing "Edit BPM/Pitch Settings..." from the "Song List" menu. Uncheck "Beat Match" and click OK.

A song is in the wrong pitch or key.

One of the automatic modes of the DJ Fader is called "Harmonic Mixing". If this is on, all songs will be pitch adjusted by a maximum of 2 semitones in order to match the key to provide seamless mixing. You can turn off Harmonic Mixing by going the DJ Fader and unchecking "Use Harmonic Mixing".

Vocal Removal Is Not Working

Remember, vocal removal is not an exact science and will vary in results from song to song. More Help On Removing Vocals.

Ripping Problems

I cannot see a CD tab to rip from!
Skips and pops are in my ripped tracks!

I cannot see a CD tab to rip from!

This is most likely because you do not have an ASPI layer properly installed. Rerun the installer and reboot.

Skips and pops are in my ripped tracks!

Older CD drives (readers) do not have the ability to seek properly to a position on a CD and, thus, if they get out of sync, it will produce a pop in the audio. Here are some things to try.

- Make sure the CD is clean and does not have scratches on it. (It may be permanently damaged and there may be no way to avoid the pop.)
- Try turning the "Jitter" setting to "ON" in the Preferences on the "Ripping Tracks" section. (Ripping may be more accurate, but slower.)
- Try ripping the CD on another CD drive if you have more than one.
- Shut down other programs, including screen savers and virus checkers to free up your computer's resources.
- Try ripping to WAV format, instead of MP3, OGG or WMA. (This requires less computer power.)
- Change your ASPI layer. If you are using the Acoustica ASPI, try un-checking it to use the default Window's ASPI layer.
- Try purchasing and installing a new CD Drive. (Writers and readers are pretty inexpensive these days.)
- Contact more support @ <http://www.acoustica.com/dj-twist-burn/support.htm>

CD Burning Problems

After I burn my CD, I can't access it on the computer!

It won't finish the burn or test! You end up with an unusable CD!

The burn fails right after it has started burning the first track (Try turning off 'Auto insert notification)!

I've tried everything. What else can I do to get it to burn successfully?

It fails right after the burn/test starts!

After I burn my CD, I can't access it on the computer!

Due to an ASPI driver conflict in some machines, you will not be able to access the CD you just burned on the computer you burned until you restart the software!

It won't finish the burn or test! You end up with an unusable CD! What's happening and what can you do about it?

It is crucial to not use any software when burning or test-burning an audio CD. The CD recorder must have a non-interruptible stream of audio data. If it is interrupted the burn will fail.

Here's what you can do to avoid a failed burn or test-burn.

- Try test burns before doing actual burns!
- Enable "Burn-Proof" in the Preferences (CD/DVD Recorder) if available! (This is enabled by default.)
- Lower your burn speed. Your computer may not be able to keep up with the demands of your CD recorder. For example, if you are burning at 8X, reduce it to 4X. Disable virus checkers and screen savers.
- Select the "Convert to wav files first" option on the Burn window.
- Do not use any other programs during a burn.
- Do not use your computer during a burn.
- Make sure that your computer is well ventilated. CD Recorders can overheat.

Burn Fails - How to turn off 'Auto insert notification'

You may need to disable something called "Auto Insert Notification" (AIN) for your CD recorder. The problem is that when the table of contents is being recorded, Window's suddenly "sees" the new CD and tries to read it, which can cause the burn to fail.

To disable Auto Insert Notification, click the Preferences menu item from the File menu. Uncheck the "Auto Insert Notification" item and click OK. You will have to reboot.

Note that after disabling AIN, when you put a CD into your drive, it will not recognize it unless you go to My Computer and double click the CD drive.

You can always turn AIN back on by re-checking the AIN checkbox. Also, when you uninstall

DJ Twist & Burn it will reset AIN to the original setting.

I've tried everything. What else can I do to get it to burn successfully?

1. Go into your System Control Panel by clicking the Start button, followed by "Settings" followed by "Control Panels". Then double click the "System" control panel to bring it up. Click on the "Device Manager" tab.

2.

Click the + next to "CDROM"

3.

Your CD drive or drives will look different. Select your CD-recorder and then click the "Properties" button.

4.

The properties page will appear. Click on the "Settings" tab. If you see the "DMA" option checked, uncheck it and then click "OK". (You may have to reboot.)

5. Also, if you have a SCSI CD recorder, you can improve the efficiency of SCSI recorders by making sure "Disconnect" and "Sync data transfer" is checked. Click "OK" and you may have to re-boot.

It fails right after the burn/test starts!

Here are some things to try.

Uncheck "CD Text" on the "Burn Audio CD!" window if the option is checked.

Disable "Auto Insert Notification"

Visit our website!

<http://www.acoustica.com/dj-twist-burn/support.htm>

What is Ripping?

Ripping is a new way of copying a track or all tracks from your personal CD to your computer. Typically, songs are ripped to MP3s, but may also be ripped to WAV files.

Creating an 80 Minute CD

First, make sure that your CD-recorder supports 80-minute audio CDs. Not all CD-recorders support 80 minute CD-Rs! If you are not sure, consult your CD-recorder's documentation or visit the manufacturer's website for help.

If the software does not properly recognize that there is an 80-minute CD-R in the drive, click the "Size" control on the "Song List" window and set it to "80 min".

IMPORTANT: You must put an 80 minute CD-R in the drive. Some CD-recorders only record up to 78 minutes 30 seconds. When you find out how much audio your recorder supports, make sure to not go over the limit or your burn may fail and you may end up with an unusable CD.

Downloading songs

DJ Twist & Burn does not download songs. This is referring to downloading songs through a website or service such as Emusic.com, for example.

Tag

A tag contains textual information such as the artist, album, genre, year and title of the song. (It is the non-audio part of a MP3 or WAV)

Close the session

This is a CD recording term. A session refers is a section of data on a CD. CDs can have multiple sessions. For example a CD-Extra disc has 2 sessions. The first session is the music and the second session has other stuff such as movies, extra artist content.

When the closes the session, it means that it is ending further writing to the session and is not allowing for new sessions. This is important for compatibility with standard CD players.

B.P.M.

Beats Per Minute also known as a tempo.

Harmonic Mixing

A song is transposed by matching the key, the perfect fourth, perfect fifth or relative minor or major of the previous songs. This method results in +/- 2 semitone transpositions at most. This method helps to smooth transitions between songs.

W.M.A.

WMA is Microsoft's audio file format, which stands for Windows Media Audio. Note that some WMAs are protected by D.R.M. (Digital Rights Management) and cannot be accessed or loaded by this software.

semi-tone

A semi-tone is a musical interval. It is the smallest interval or distance between two adjacent keys in the diatonic scale. For example, C# would be one semi-tone or half step above C. There are 12 semi-tones or half-steps in the diatonic scale.

Time stretched

The original time or length of the song has been altered so that it plays back slower or faster, without affecting the pitch!

ASPI

ASPI stands for Advanced SCSI Programming Interface and is the driver system that CD burning programs access and communicate with CD & DVD burners.